





100



500



307



400



804



900



405



801



309



802



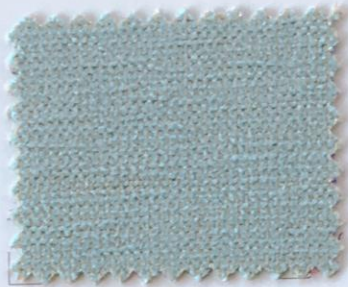
800



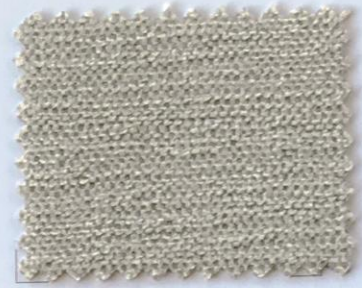
901



911



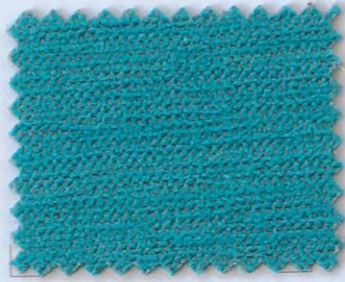
703



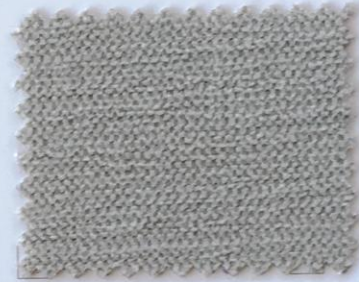
602



001



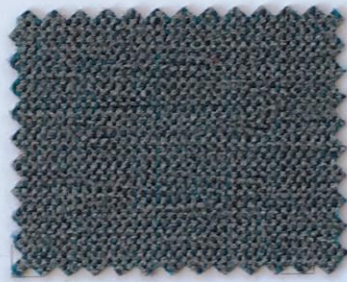
701



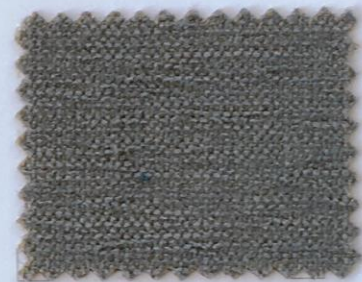
605



003



700



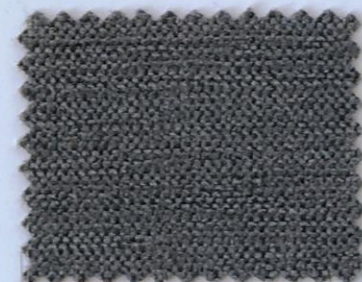
603



002



702



600



705



200

CALIENTE



caratteristiche tecniche - technical details

composizione composition	52% PP - 48% PL	
altezza width	140 cm	
peso weight	295 ± 2% gr/m ²	
solidità delle tinte allo sfregamento color fastness to rubbing crock meter - ISO 105 X 12	secco / dry	4/5
	umido / wet	4
solidità delle tinte alla luce artificiale color fastness to artificial light xeno - ISO 105 B 02	4 - 4/5	
resistenza al pilling pilling resistance ISO 12945-2	4/5	
resistenza all'abrasione abrasion resistance martindale - ISO 12947-2	> 40.000 cicli / rubs	
solidità del colore al lavaggio dom./comm. 40° color fastness machine washing (40°) ISO 105 C 06	4/5	
norme di manutenzione cleaning		
resistenza al fuoco fire retardant	Italia Italy	UNI 9175 Class 1 IM
	Europa Europe	EN 1021-1:2006 EN 1021-2:2006
	Inghilterra England	BS 5852 IS 0 (cigarette) BS 5852 IS 1 (match)
	Stati Uniti d'A. U.S.A.	California TB 117:2013
	Nautico Nautical	FTP Code 307(88):10 Annex 1 Part 8 ex. IMO res. A 652 (16)

Alcuni coloranti per l'abbigliamento e accessori (es. jeans) possono migrare verso i colori chiari di questo articolo. Questo fenomeno aumenta con l'umidità e la temperatura. ABITEX non si assume alcuna responsabilità per il trasferimento di colori causato.

Some dyes for clothing and accessories (ex. jeans) may migrate to the bright colors of this article. This phenomenon increases with the humidity and the temperature. ABITEX assumes no responsibility for the transfer of colors caused.