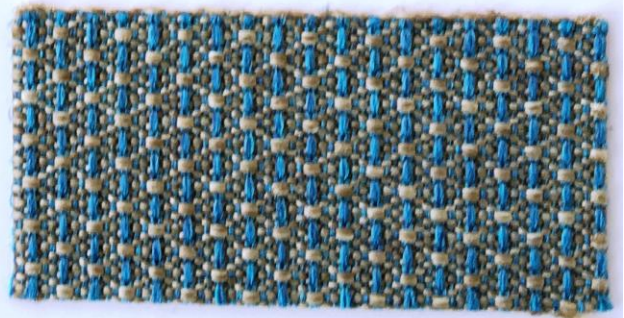


700



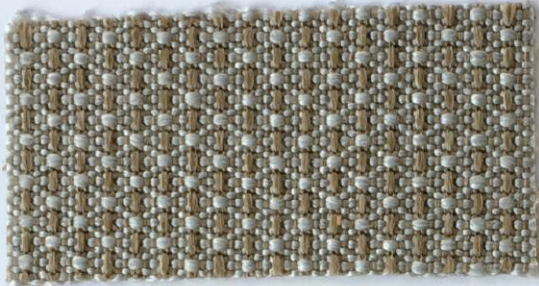
706



100



111



401



600



402



400



403



404



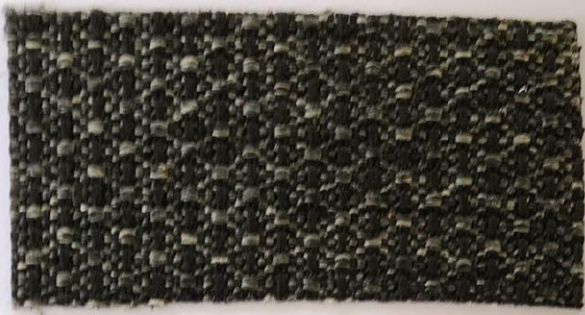
406



405



200



201



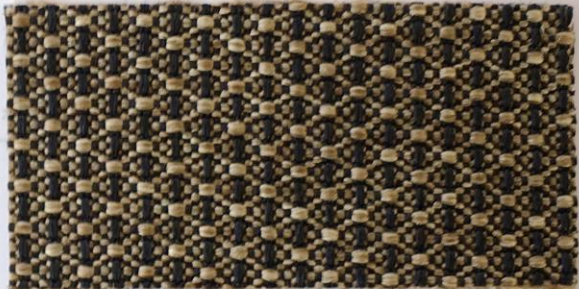
601



407



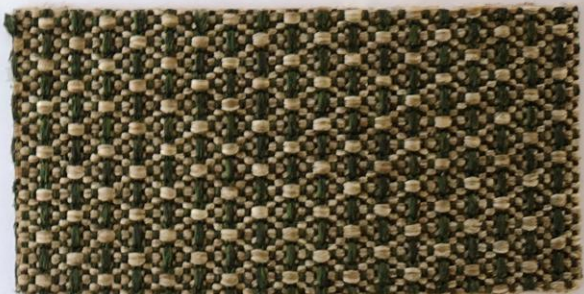
701



702



801



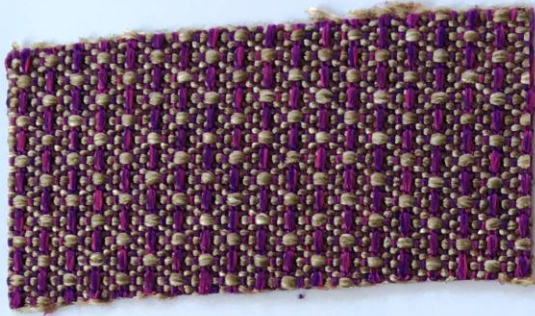
802



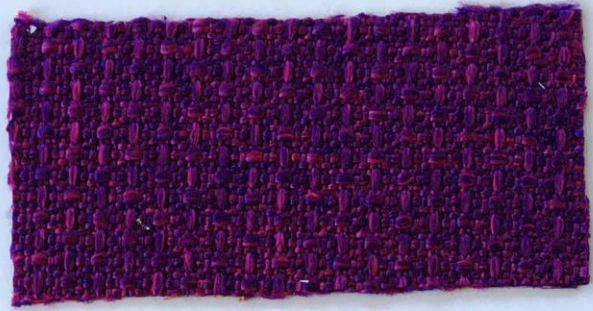
301



303



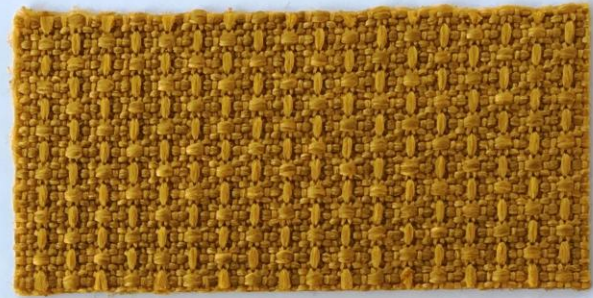
904



900



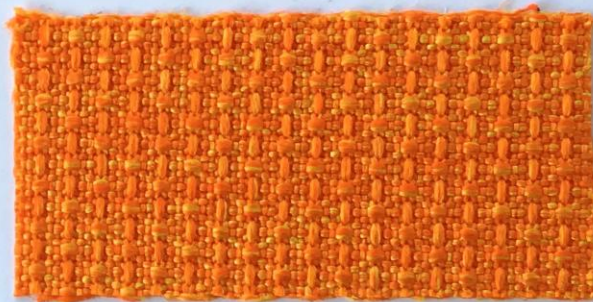
504



500



308



307



803



800



302



# ANGEL JUMBO



caratteristiche tecniche - technical details		
composizione composition	100% PP FR (nativa)	
altezza width	140 cm ± 2%	
peso weight	350 gr/m <sup>2</sup> ± 3%	
solidità delle tinte alla luce color fastness to light xeno - ISO 105 B12	4-5	
solidità delle tinte allo sfregamento color fastness to light crockmeter - ISO 105 X12	secco / dry 5 umido / wet 4/5	
resistenza al pilling pilling resistance ISO 12945-2	4/5	
scorrimento fili seam slippage ISO	1,50 mm	
resistenza all'abrasione abrasion resistance martindale - ISO 12947-2	≥ 33.000 cicli / rubs	
resistente a resistant to	<b>questo filato è: idrorepellente - antistatico anallergico - antibatterico - irrestringibile this yarn is: water repellent - antistatic hypoallergenic - antibacterial - no-shrink</b>	
norme di manutenzione cleaning		
nota bene please note	consigliato lavaggio a secco dry clean suggest	
<b>ATTENZIONE WARNING</b>	Articolo non idoneo all'uso esterno/outdoor Not suitable for external/outdoor use	
resistenza al fuoco (la resistenza al fuoco dipende dal tipo di schiuma utilizzata)  fire retardant (flame retardant performance is dependent upon the foam used)	Italia Italy	UNI 9175 Class 1IM
	Europa Europe	EN 1021-1:2006 EN 1021-2:2006
	Inghilterra England	BS 5852 IS CRIB 5
	Francia France	NF D 60-013:2006 (art. AM 18)
	Stati Uniti U.S.A.	California TB 117:2013
	Navale Nautical	FTP Code 307(88):10 Annex 1 Part 8 ex. IMO res. A 652 (16)

Questi valori sono dati a titolo indicativo e in buona fede e non possono considerarsi in alcun caso vincolanti. L'impiego del prodotto deve essere valutato in base a ciò che si deve realizzare. Non si risponde del suo utilizzo per impieghi impropri. Sono ammesse leggere differenze di colore tra differenti partite.  
The overmentioned data correspond to average values communicated in good faith, but they cannot be considered as a contract document. The product use has to be considered in term of what has to be realized. The product cannot be held up responsible when it is improperly use. Slight colors differences among several lots are admitted.