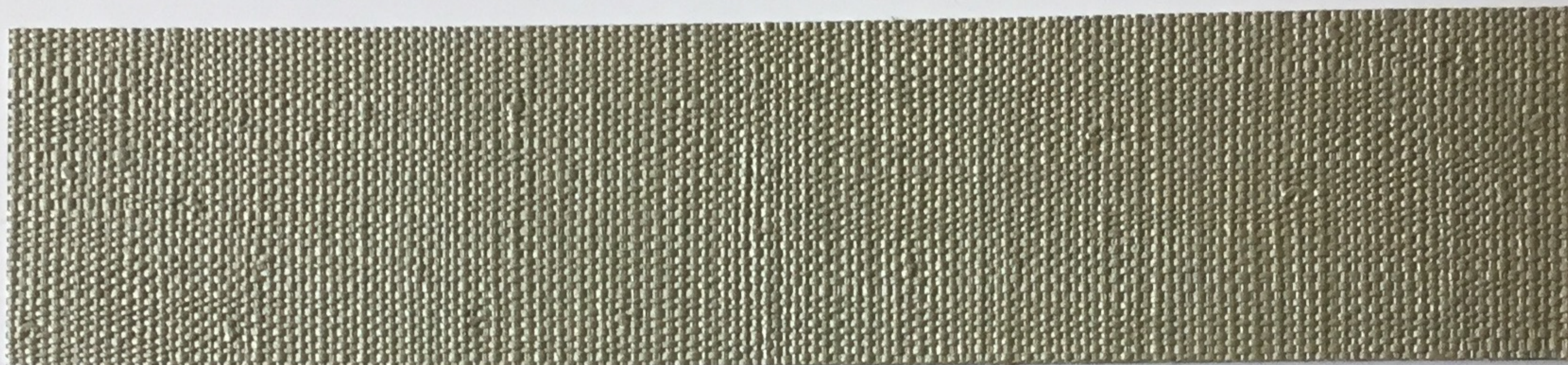
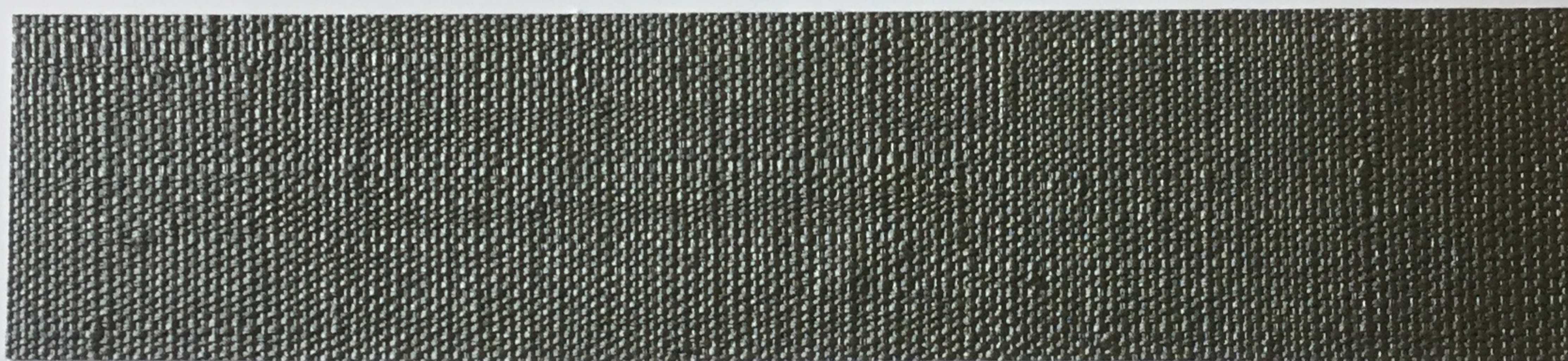


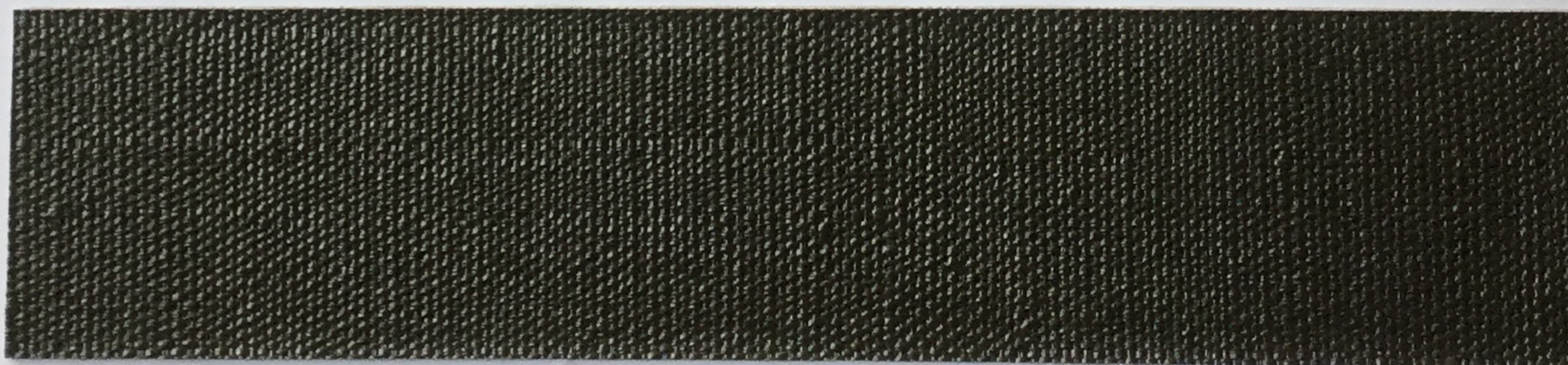
994



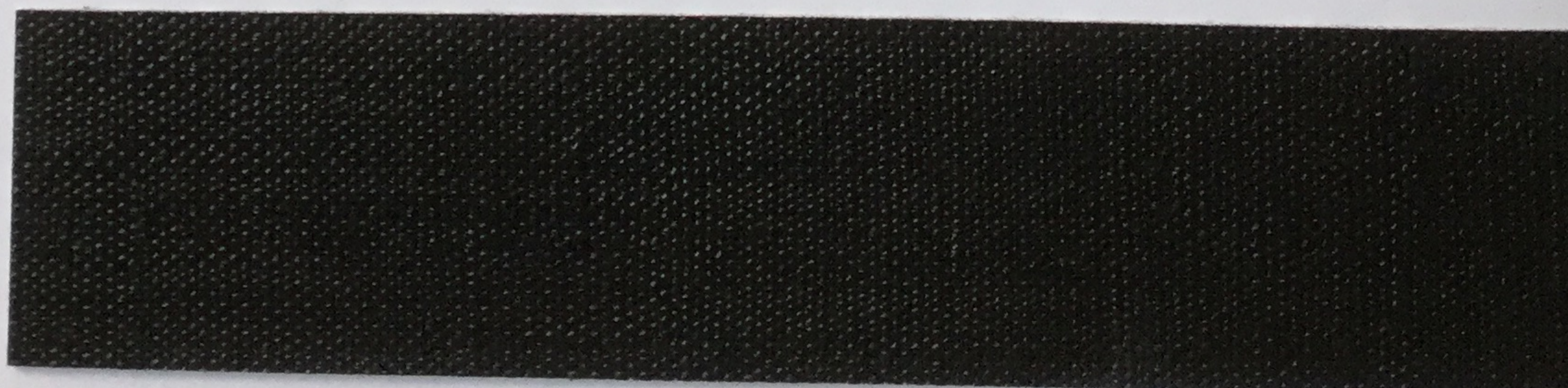
995



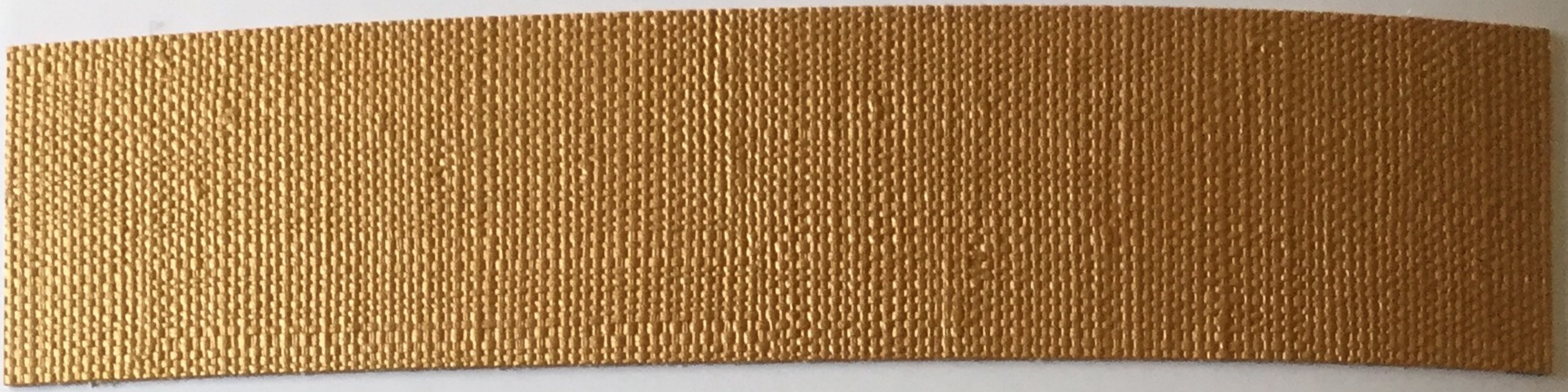
346



997



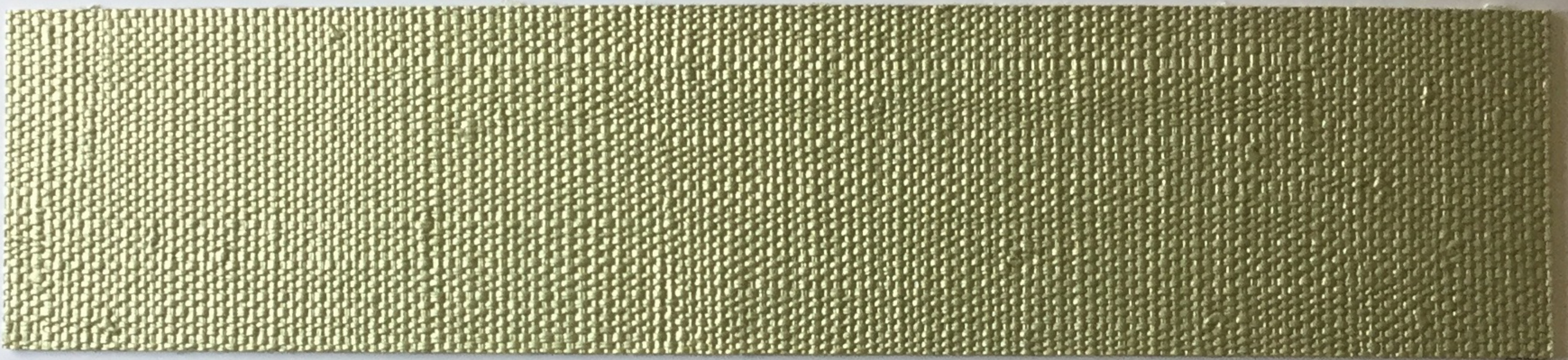
990



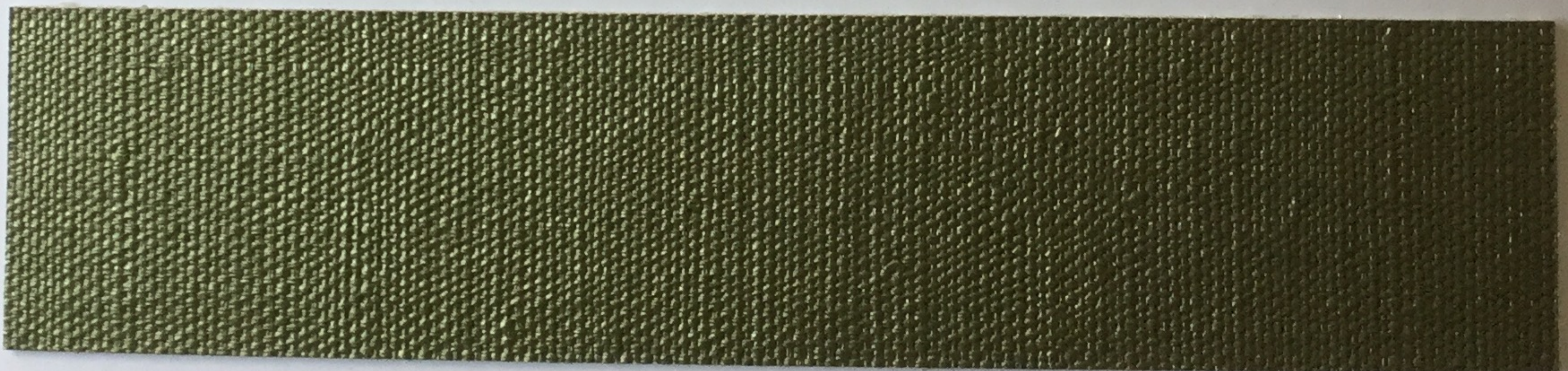
993



111



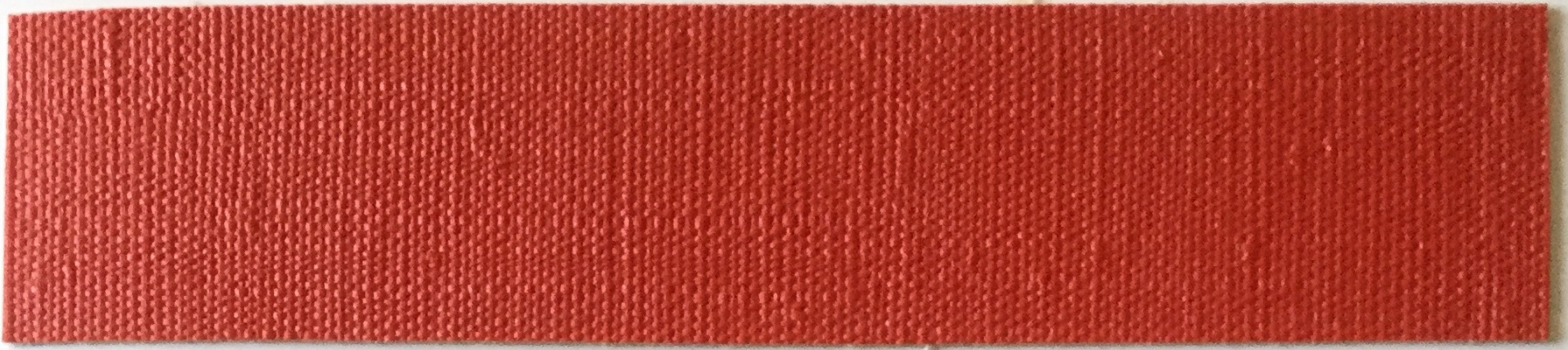
996



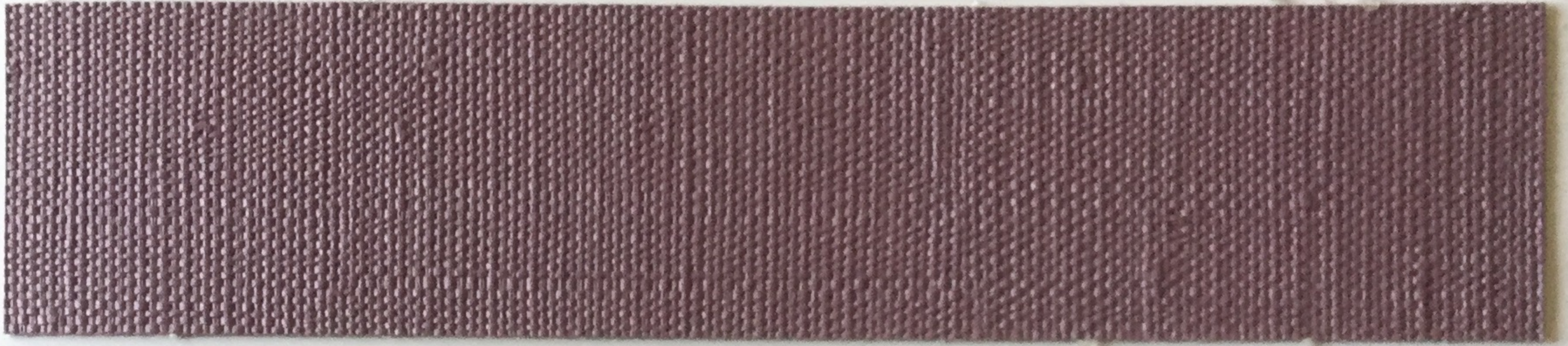
352



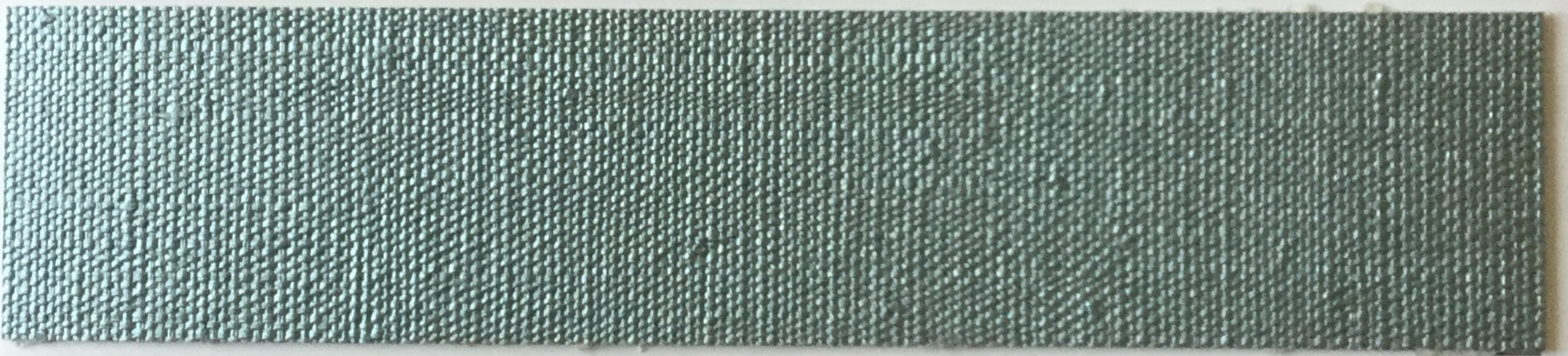
834



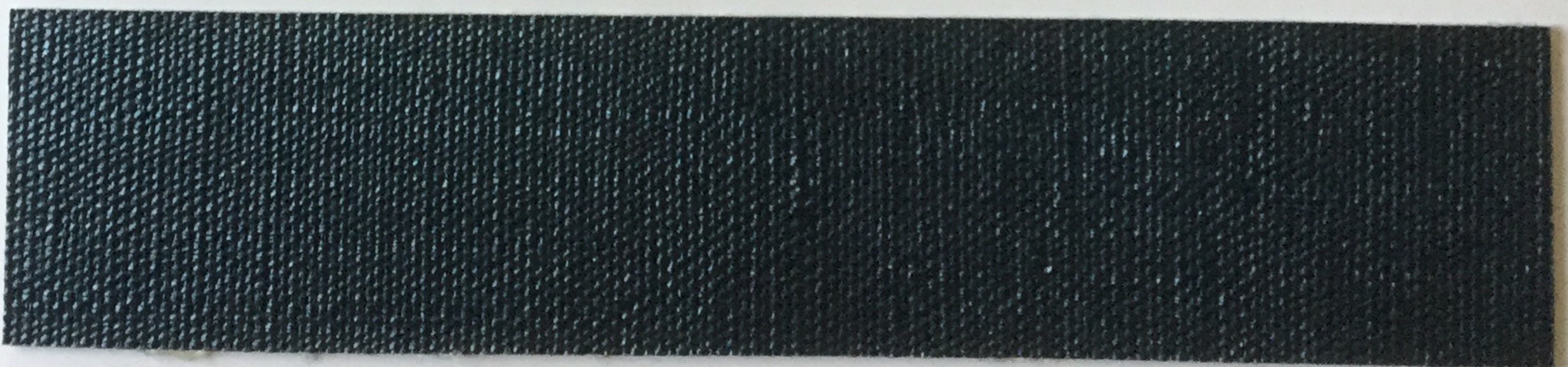
998



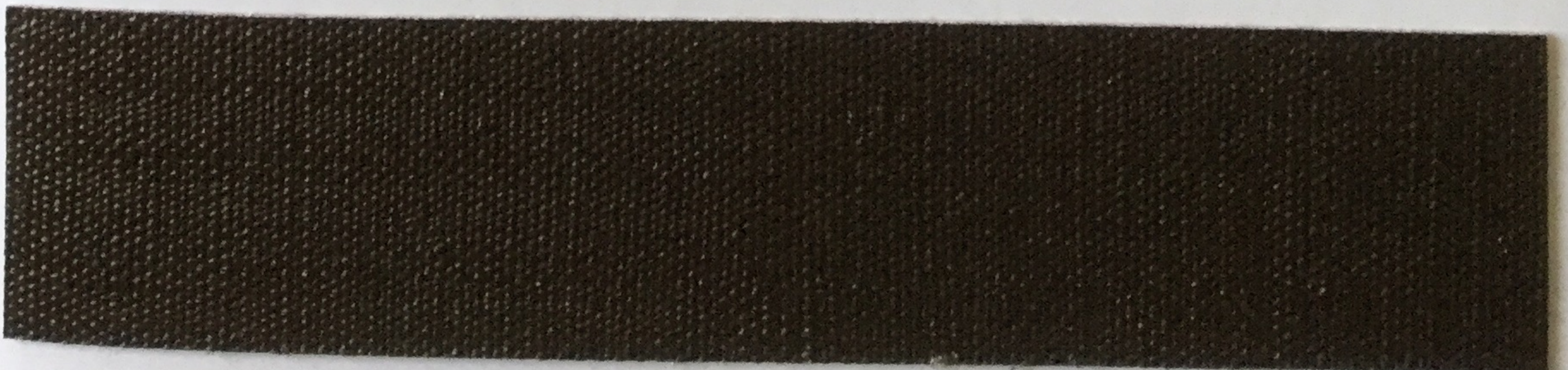
501



347



992



502



caratteristiche tecniche - technical details	
composizione composition	86% PVC - 2% PU - 6% PL - 6% CO
altezza width	137 / 140 cm
peso weight	700 ± 5% gr/m ²
spessore thickness	1,1 mm ± 0,2 mm
carico a rottura tensile resistance UNI EN ISO 1421	lunghezza / long > 300 N/5cm altezza / across > 200 N/5cm
allungamento a rottura extension at break UNI EN ISO 1421	lunghezza / long > 40 % altezza / across > 145 %
resistenza alla lacerazione tear strenght UNI 4818 P9	lunghezza / long > 50 N altezza / across > 90 N
delaminazione adhesion UNI EN ISO 2411	lunghezza / long > 30 N altezza / across > 30 N
solidità delle tinte allo sfregamento color fastness to rubbing crock meter - EN ISO 105 X 12	secco / dry 4 umido / wet 4
solidità delle tinte alla luce artificiale color fastness to artificial light xeno - UNI ISO 4582/4892	scala dei blu 5 blu scale
resistenza all'abrasione abrasion resistance martindale - EN ISO 5470 - 2	> 50.000 cicli / rubs
esente da free from	COL - AZO - CD - FCKW - PCB - PCP - PCT FORMALDEIDE - FORMALDEHYDE
norme di manutenzione cleaning	

resistenza al fuoco (la resistenza al fuoco dipende dal tipo di schiuma utilizzata) fire retardant (flame retardant performance is dependent upon the foam used)	Italia Italy	UNI 9175 Class 1IM
	Europa Europe	EN 1021-1:2006 EN 1021-2:2006
	Inghilterra England	BS 5852-0:1979 (cigarette) BS 5852-1:1979 (match)
	Stati Uniti U.S.A.	California TB 117:2013
	Nautico Nautical	FTP Code 307(88);10 Annex 1 Part 8 ex. IMO res. A 652 (16)

Alcuni coloranti per l'abbigliamento e accessori (es. jeans) possono migrare verso i colori chiari di questo articolo. Questo fenomeno aumenta con l'umidità e la temperatura. ABiTEX non si assume alcuna responsabilità per il trasferimento di colori causato.

Some dyes for clothing and accessories (ex. jeans) may migrate to the bright colors of this article. This phenomenon increases with the humidity and the temperature. ABiTEX assumes no responsibility for the transfer of colors caused.