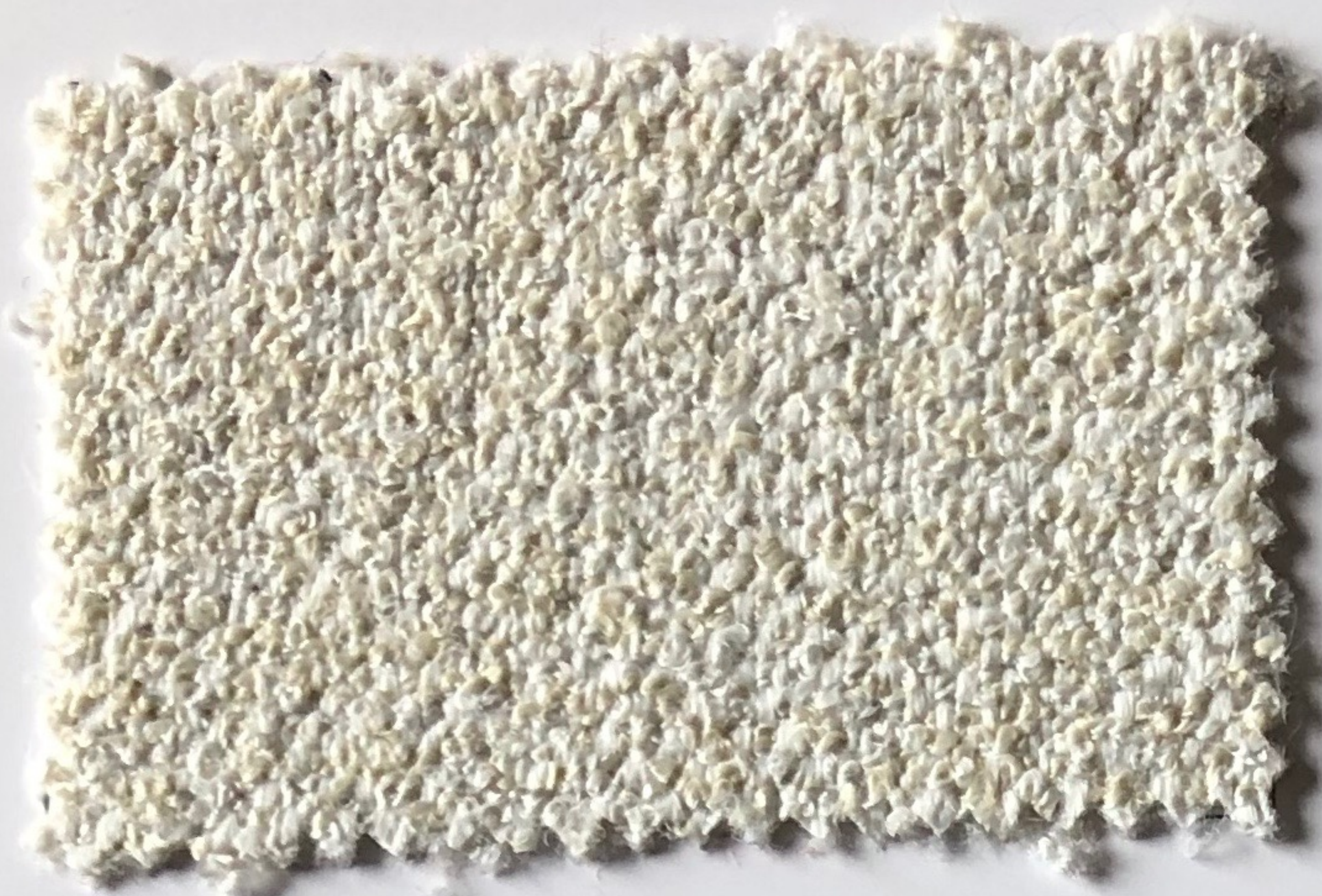


# KONJAC

DIS. BARRE'

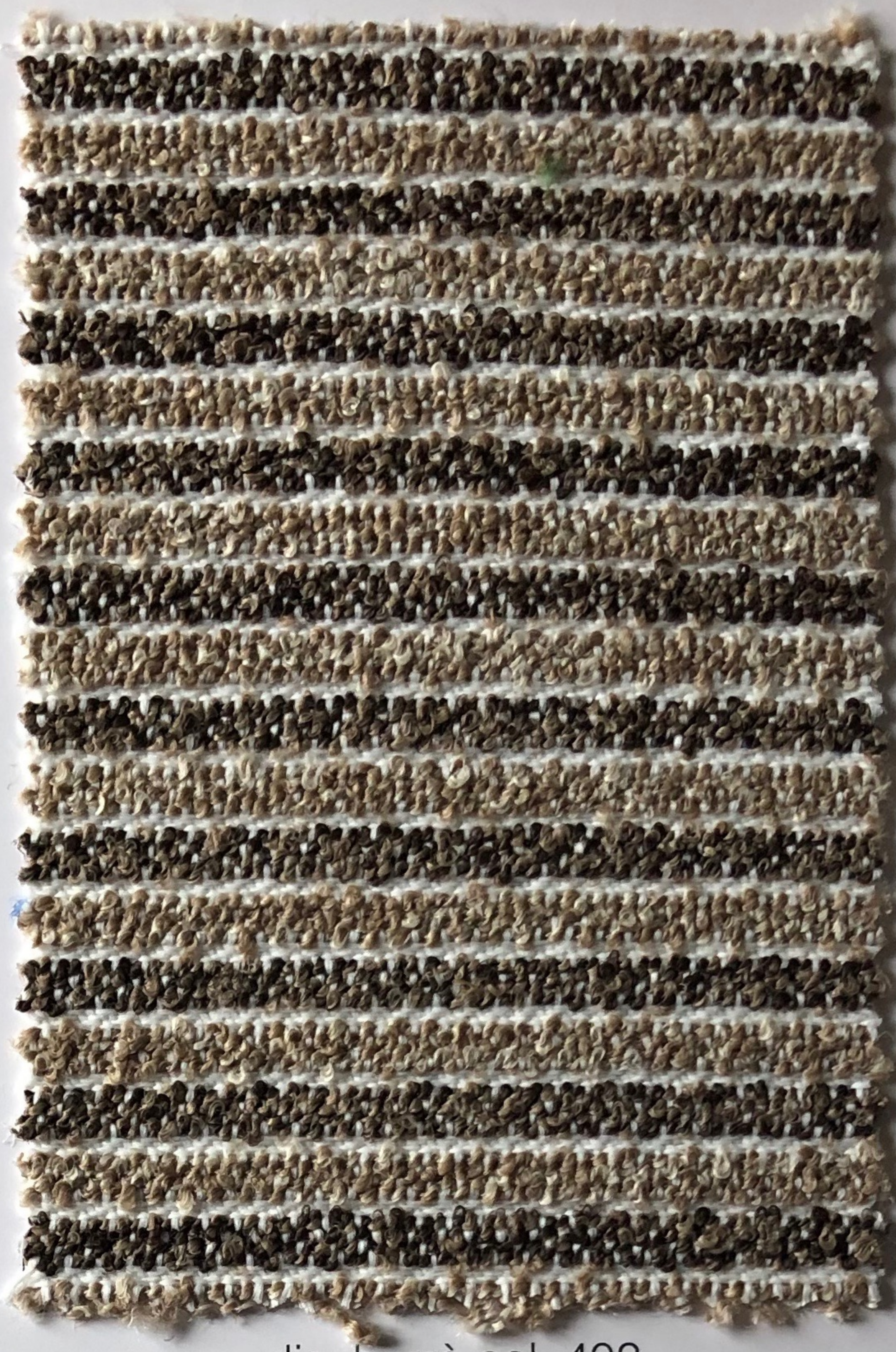




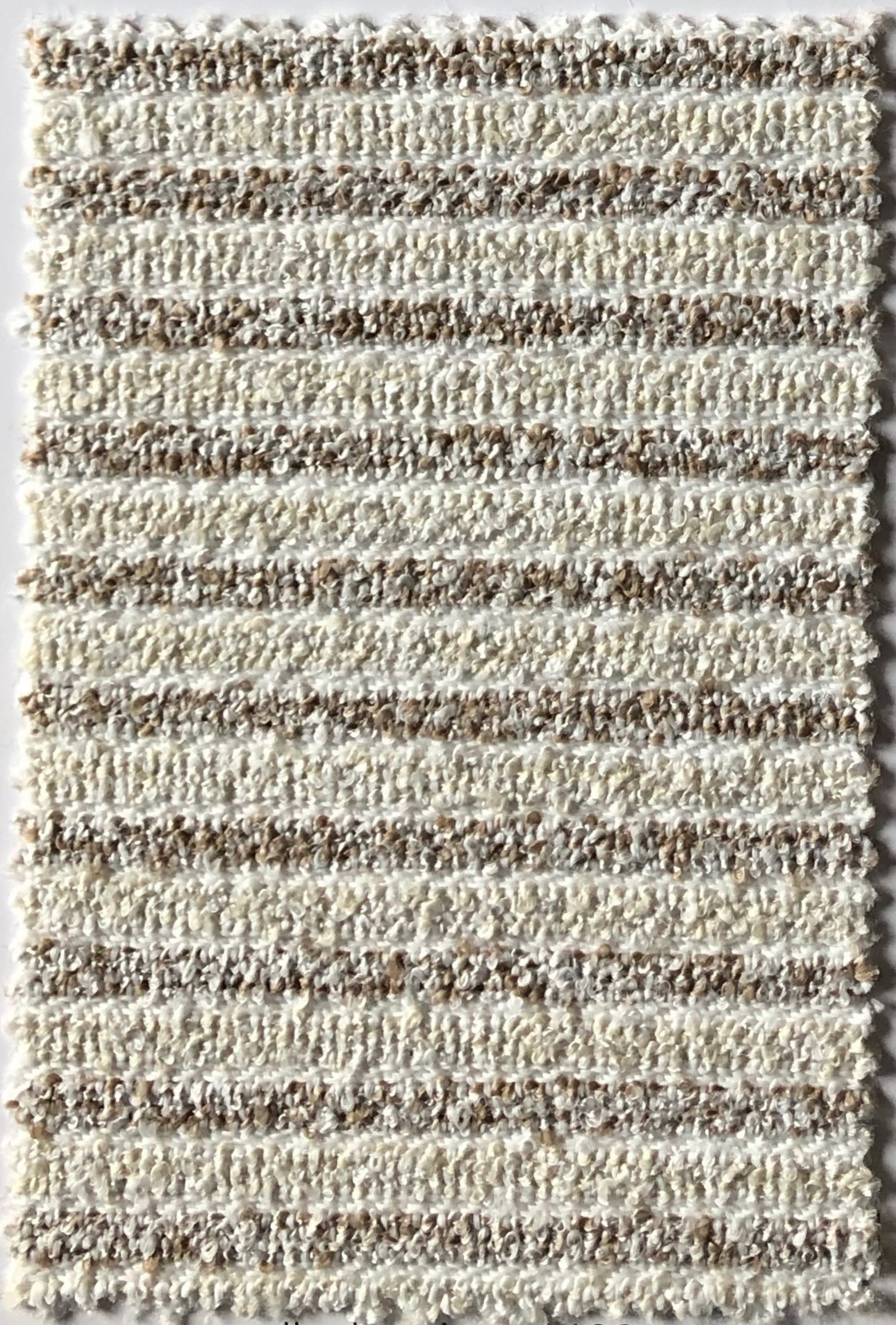
dis. grisaglia col. 100



dis. grisaglia col. 101



dis. barrè col. 402



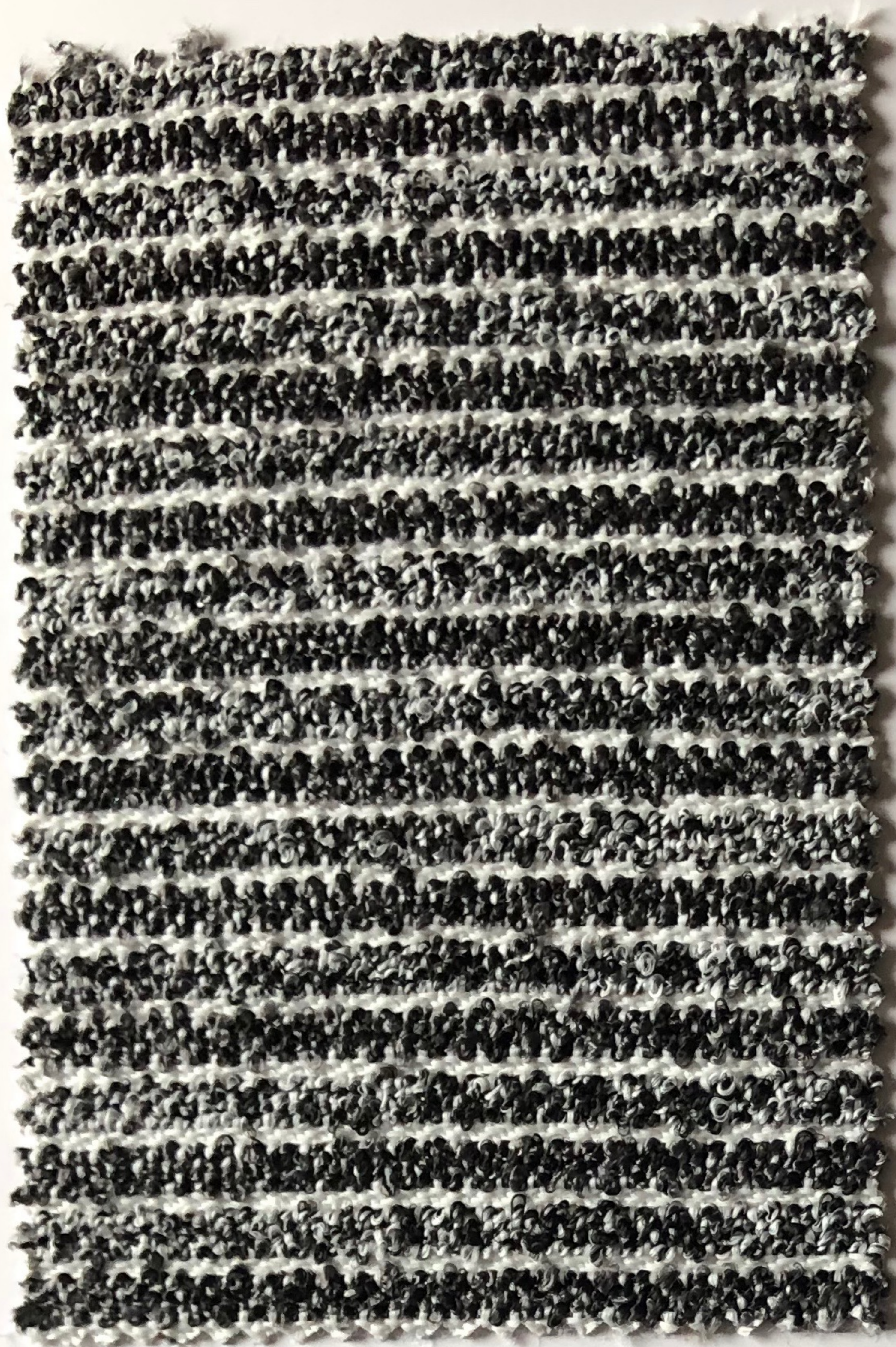
dis. ba. è col. 103



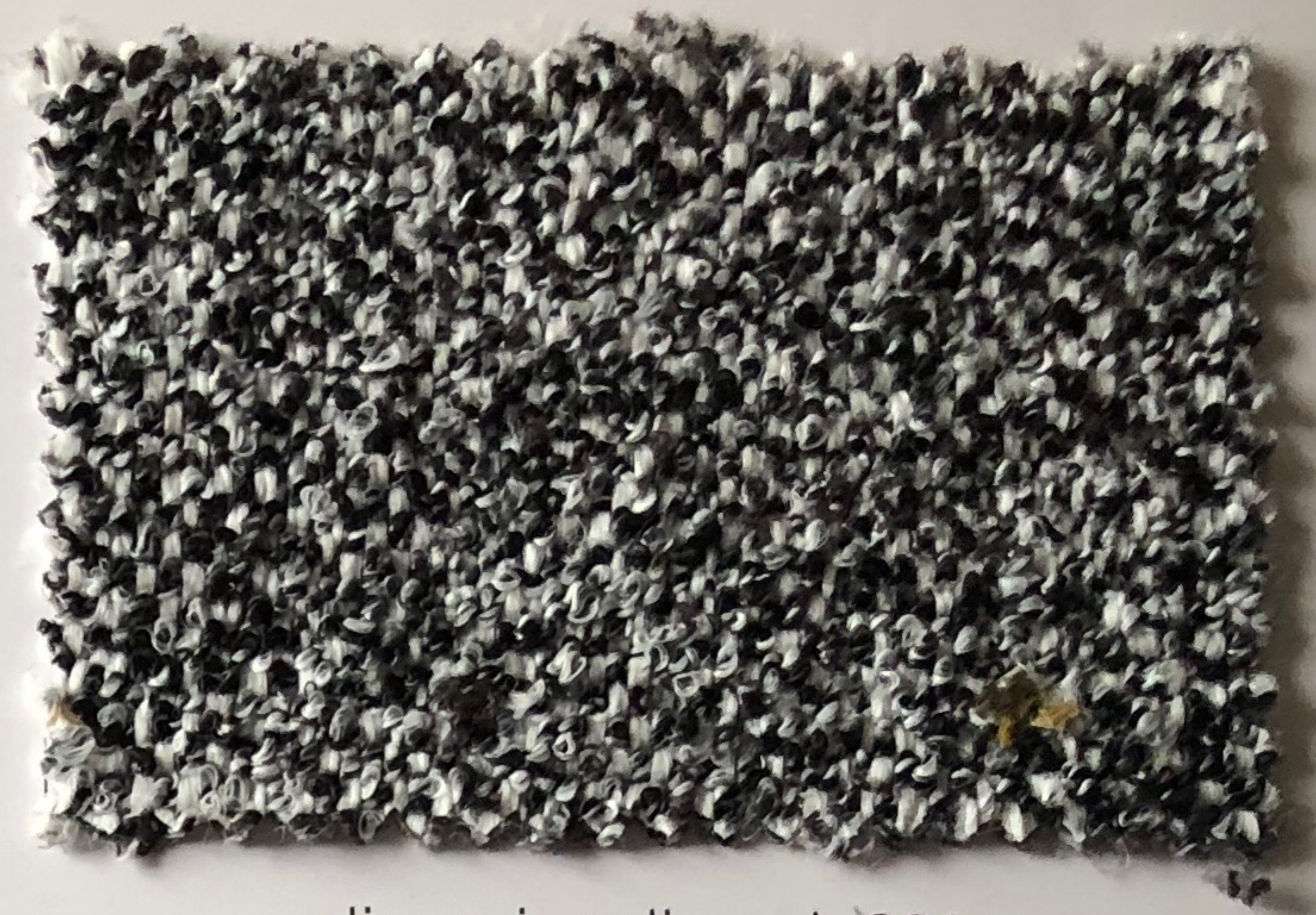
dis. grisaglia col. 102



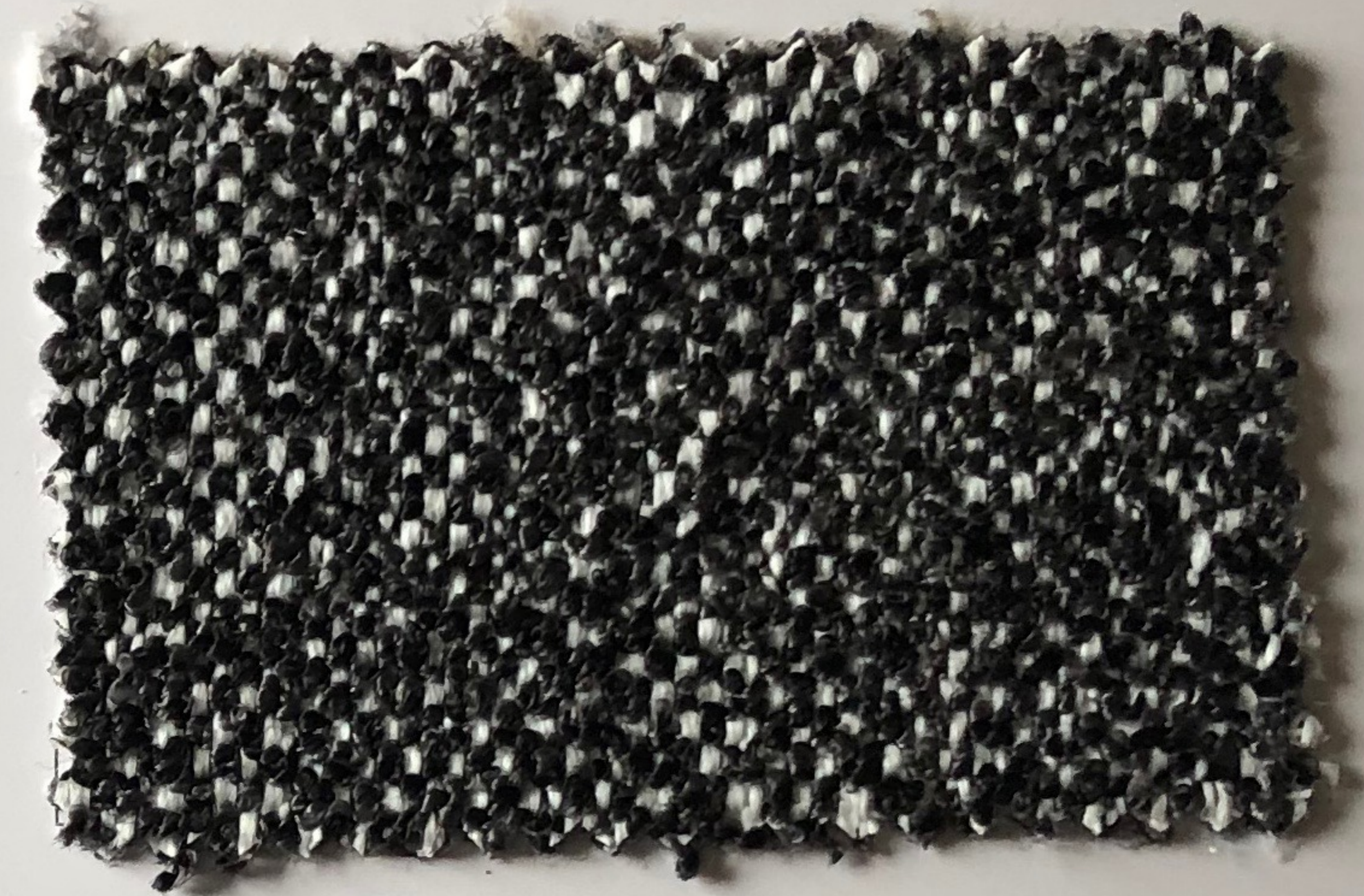
dis. grisaglia col. 403



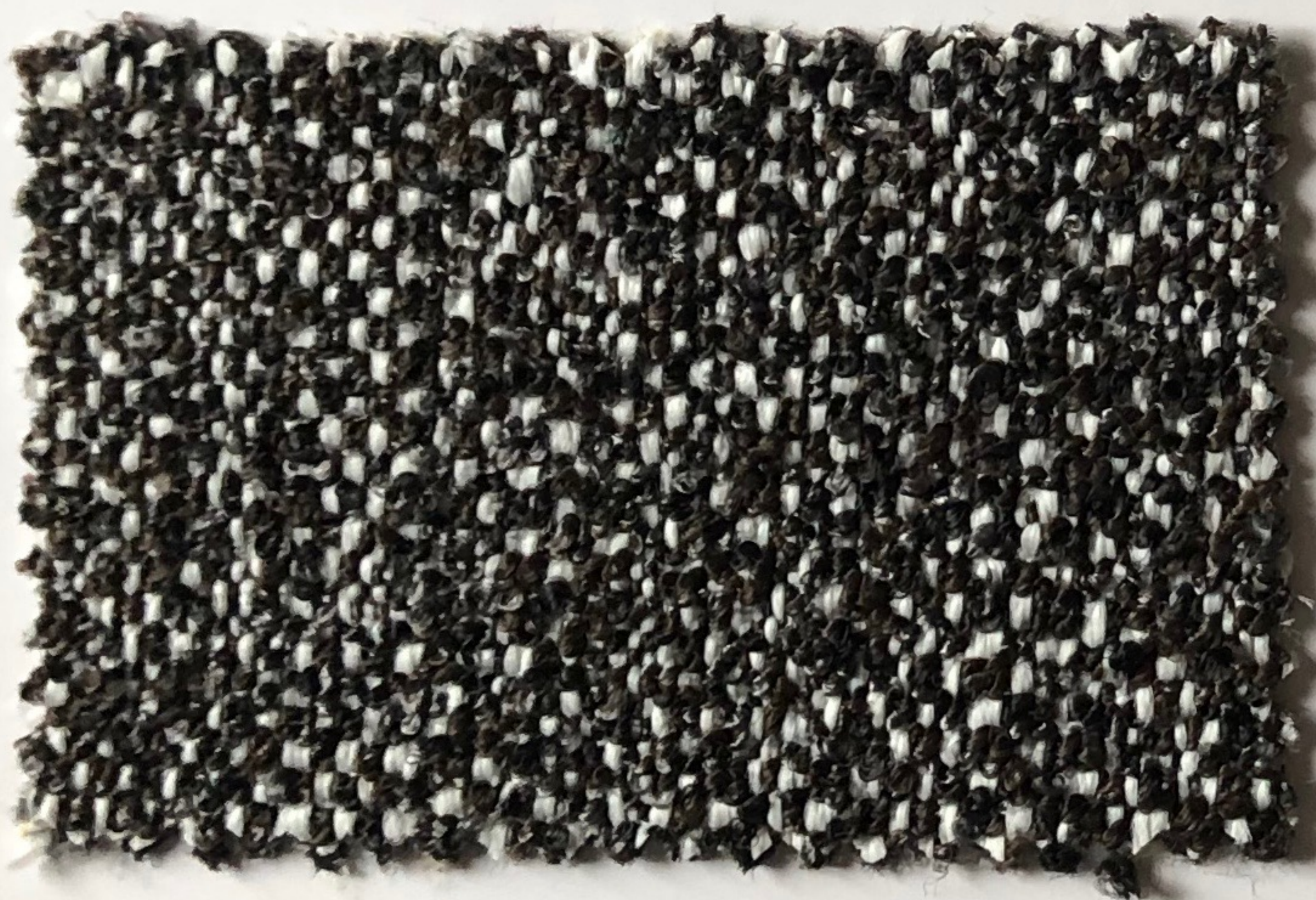
dis. barrè col. 602



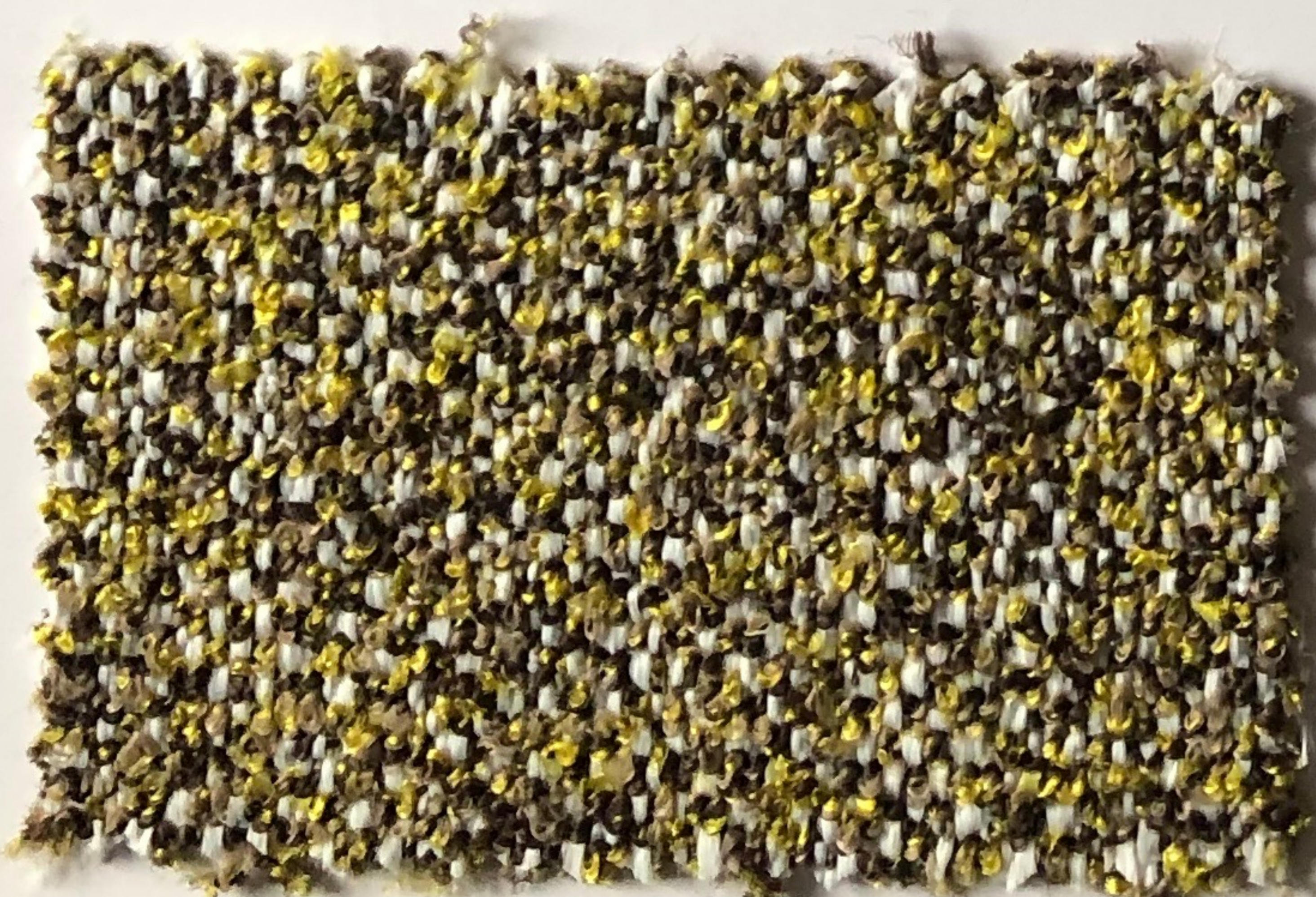
dis. grisaglia col. 600



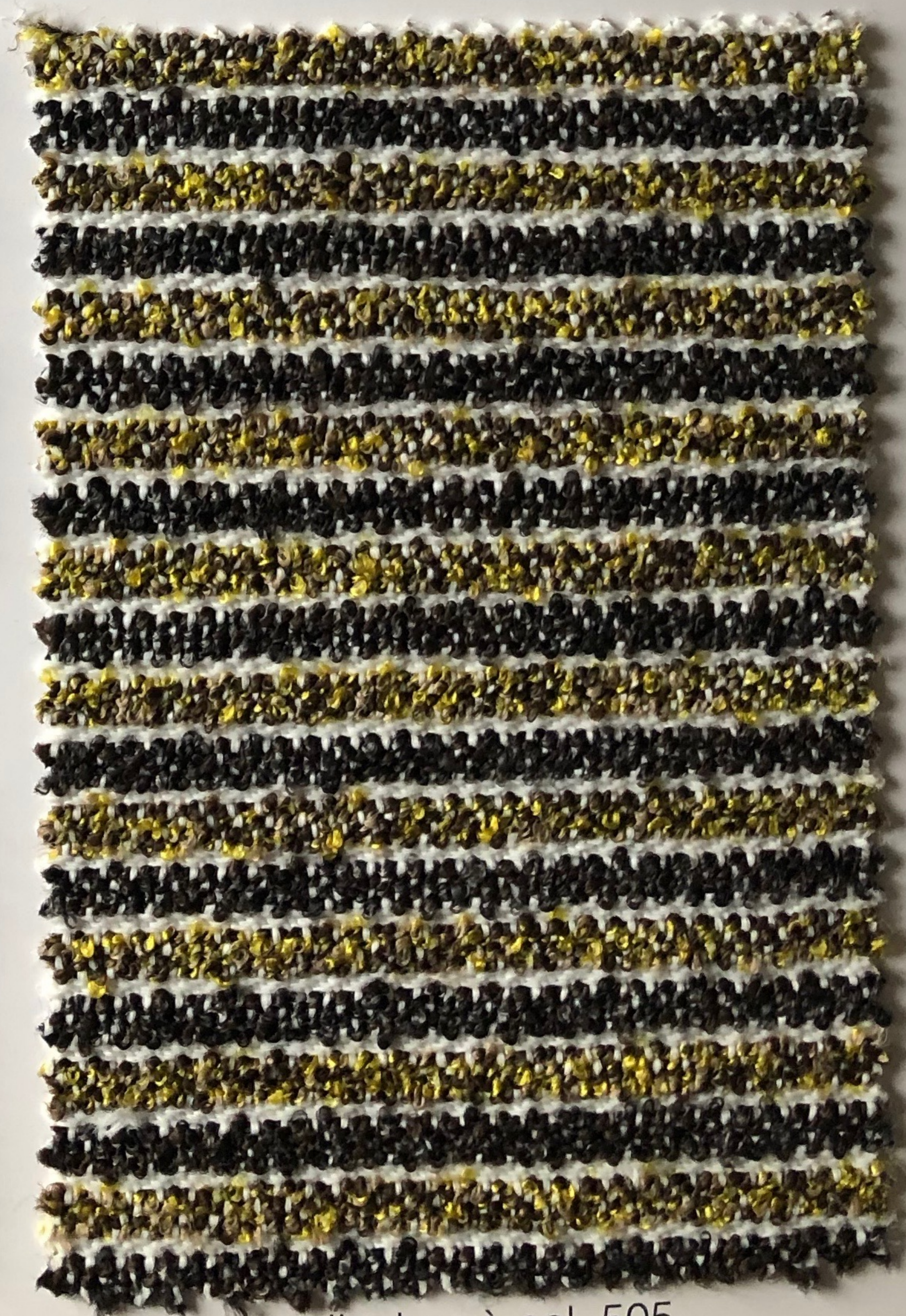
dis. grisaglia col. 200



dis. grisaglia col. 405



dis. grisaglia col. 500



dis. barrè col. 505



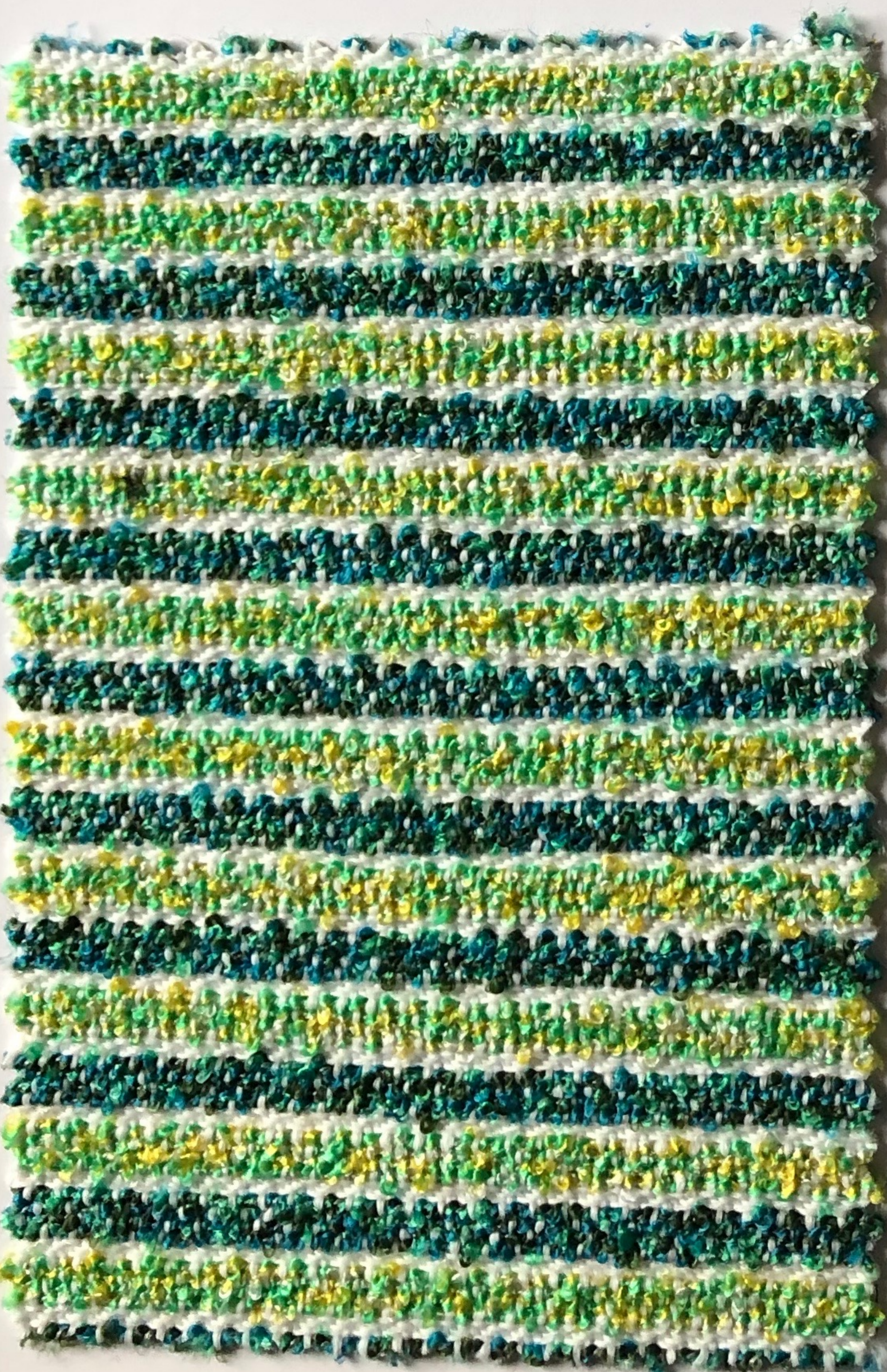
dis. grisaglia col. 804



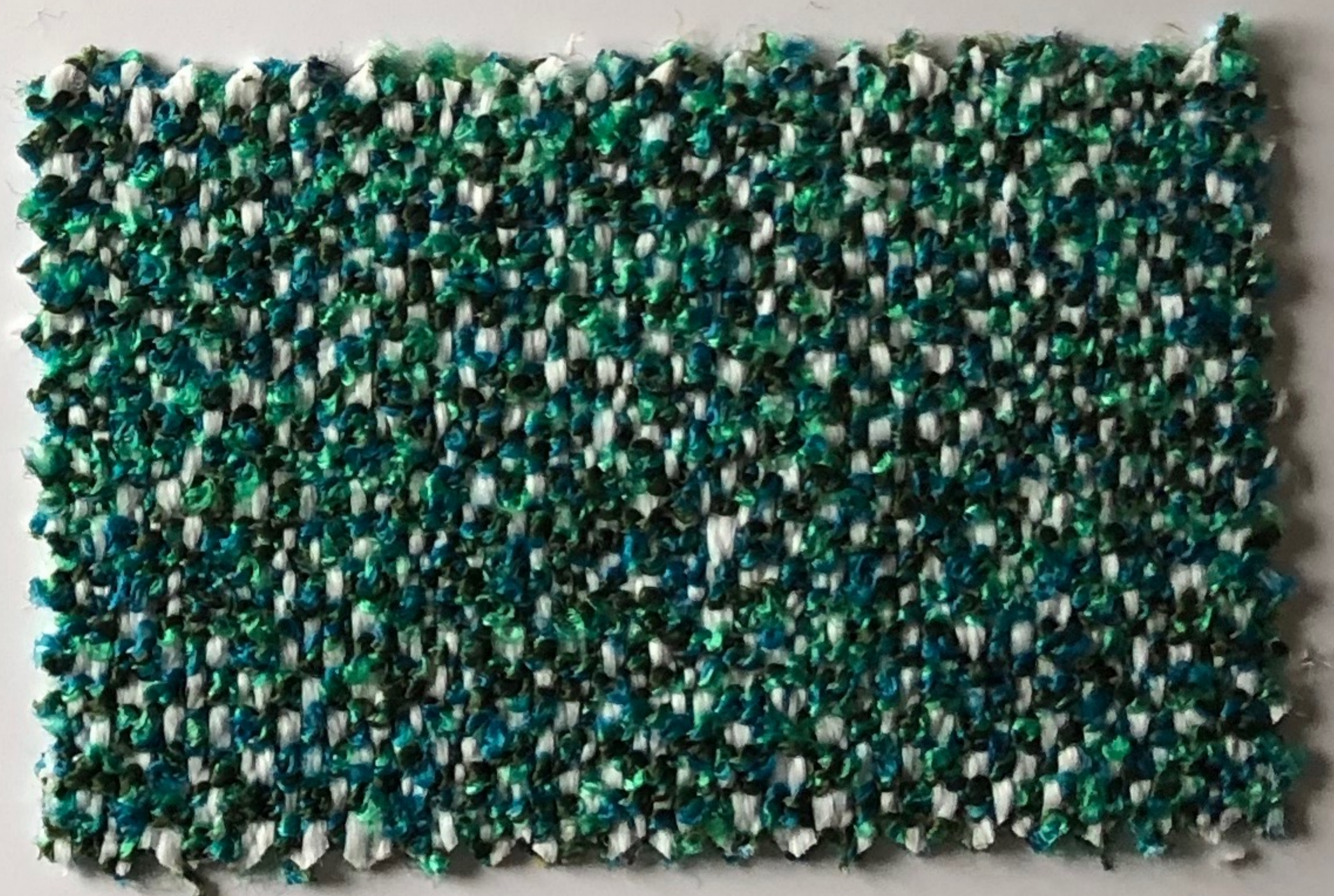
dis. grisaglia col. 800



dis. barrè col. 808



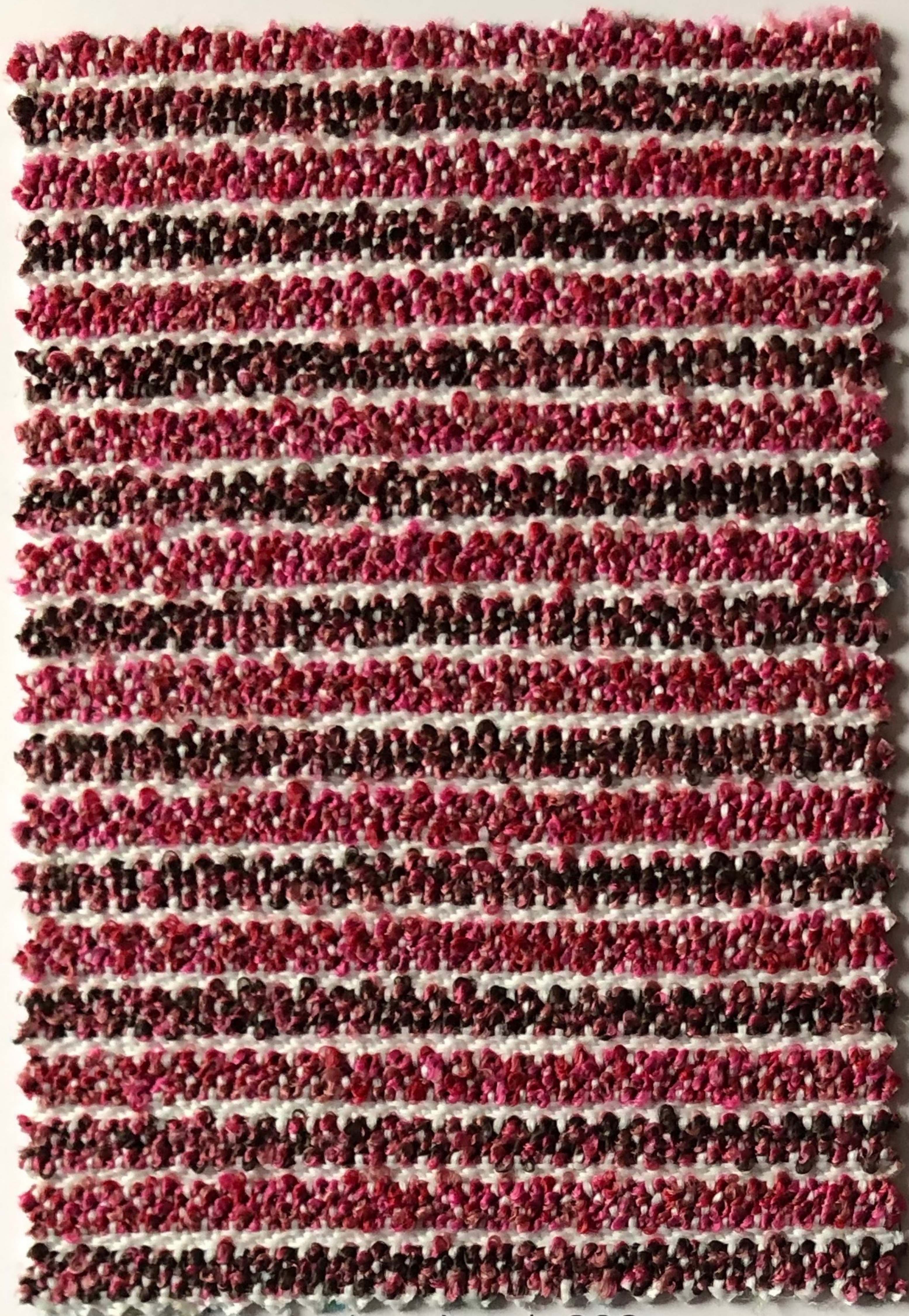
dis. barrè col. 805



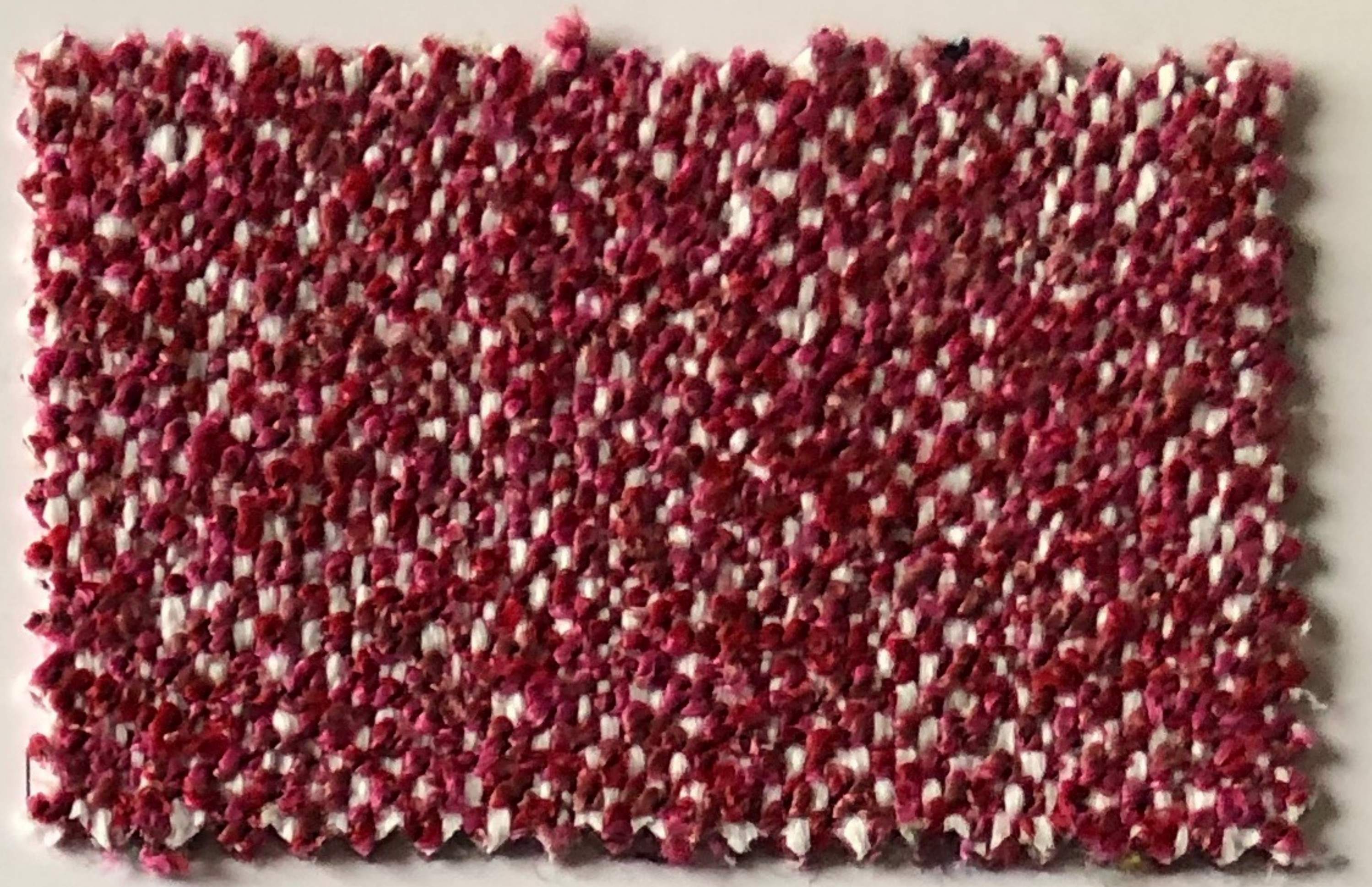
dis. grisaglia col. 807



dis. grisaglia col. 508



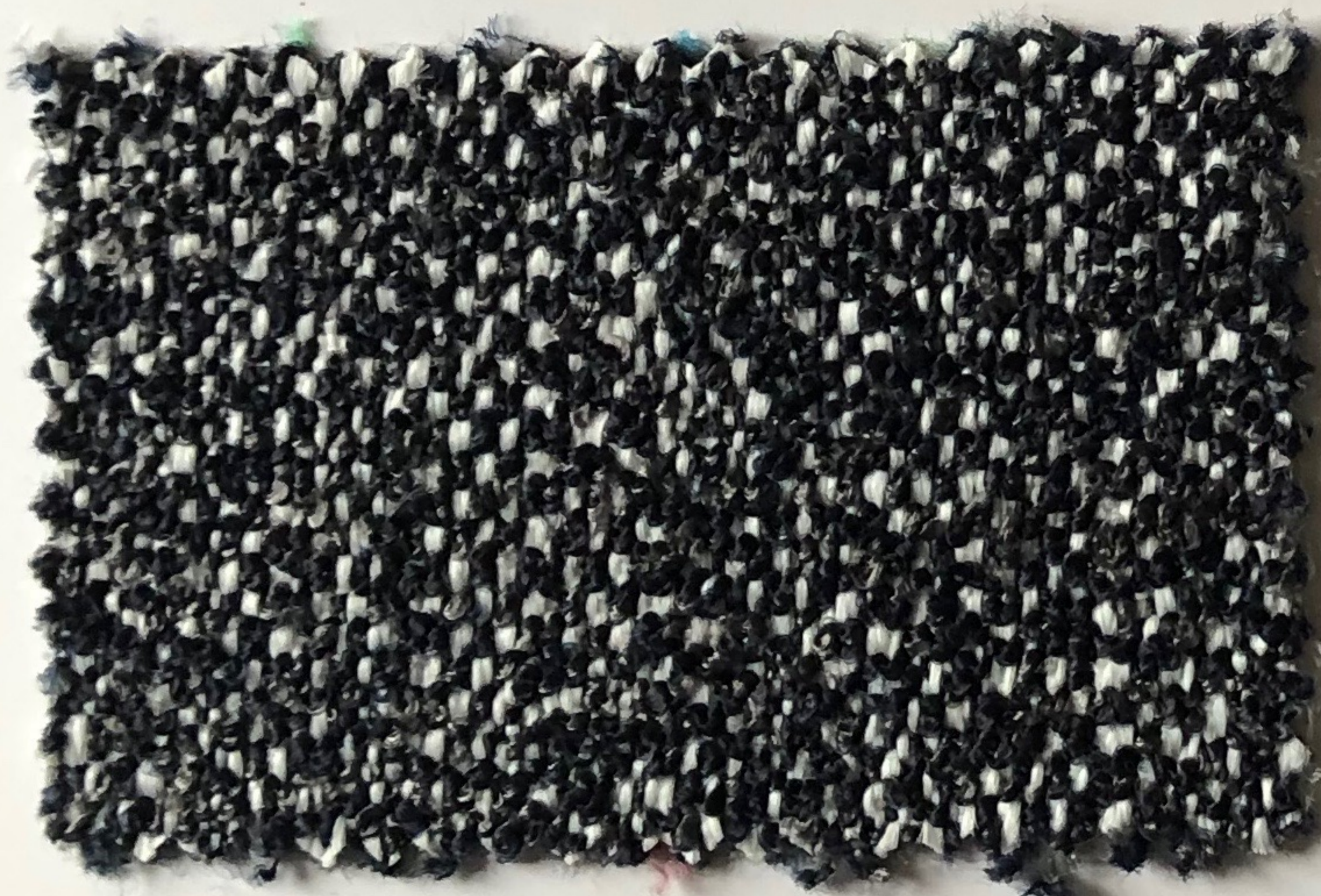
dis. barrè col. 303



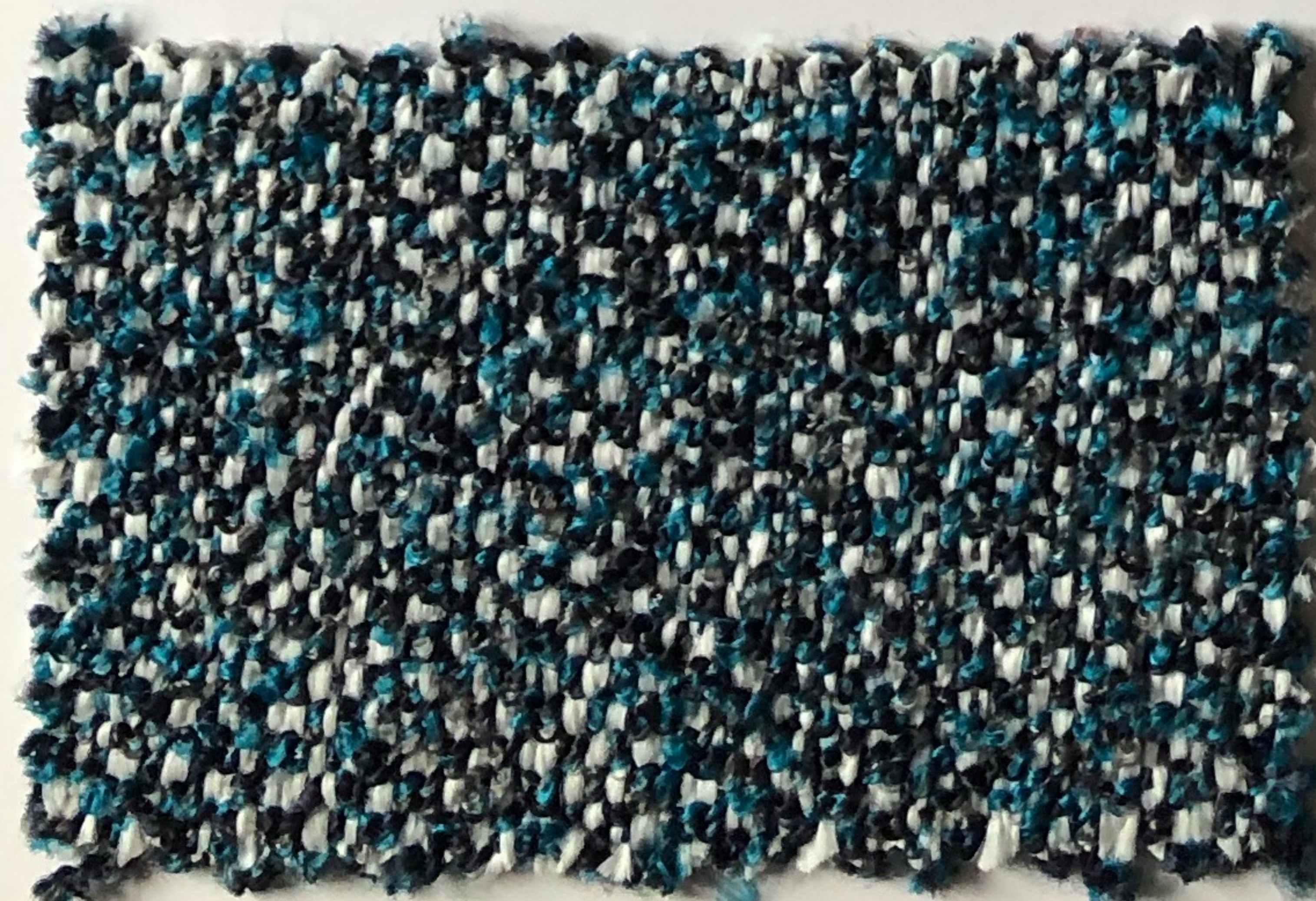
dis. grisaglia col. 305



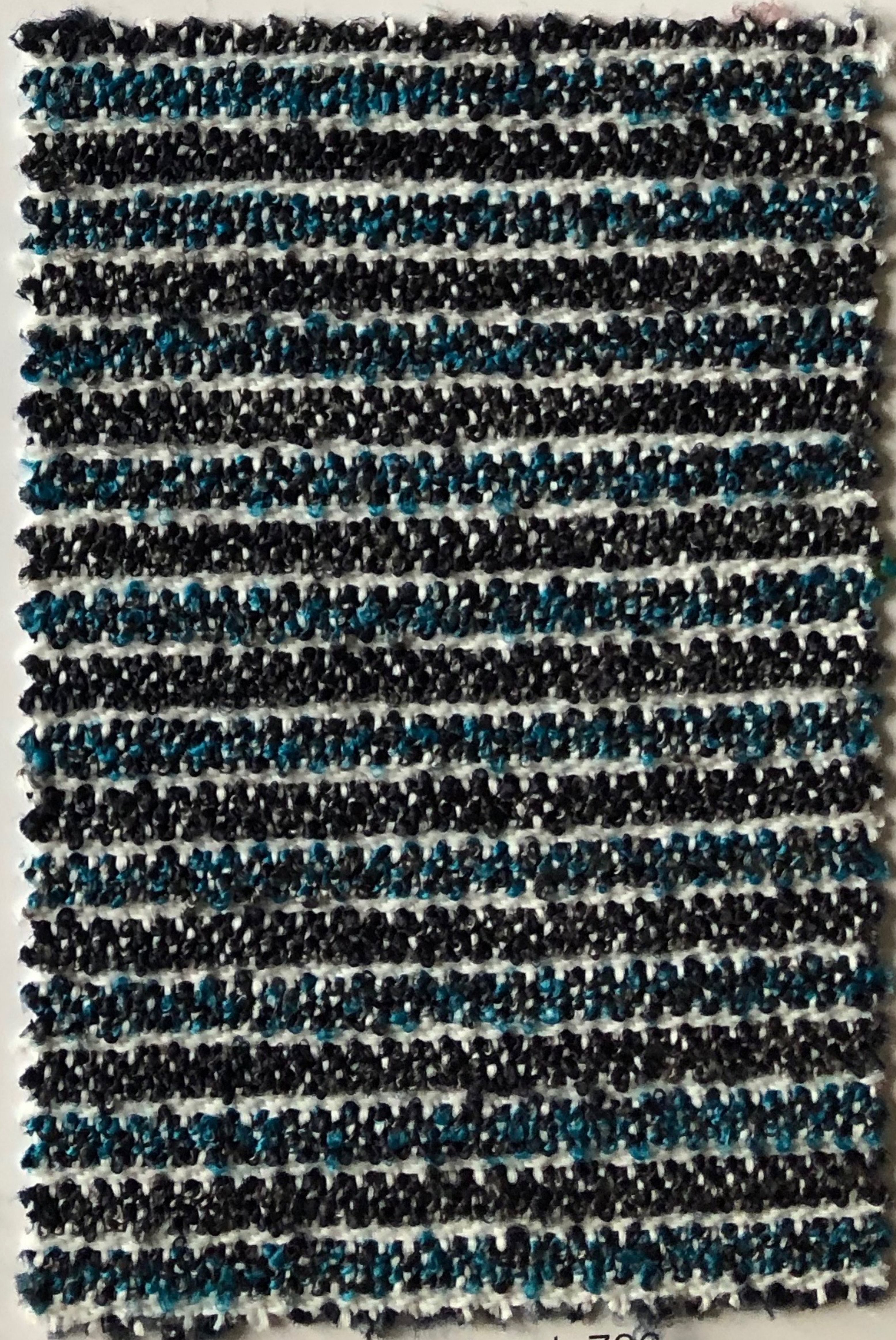
dis. grisaglia col. 300



dis. grisaglia col. 700



dis. grisaglia col. 707



dis. barrè col. 706

# KONJAC

DIS. GRISAGLIA



dis. grisaglia col. 111

# specifiche tecniche

---



codice doganale

54072011

composizione

100% polipropilene

altezza

cm  $\pm$  140

peso

peso  $\pm$  450 gr/m<sup>2</sup>

tintura

il prodotto é tinta in massa

lunghezza pezze

circa 35 mtl.

abrasione

> 70.000 cicli, ISO 12947-2

solidità alla luce

7, ISO 105 B02

solidità allo sfregamento

secco 5, umido 4/5, ISO 105 X12

resistenza alla cucitura

ordito 4 mm, trama 3 mm, ISO 13936-2

pilling

5, ISO 12945-2

attenzione

sono ammesse leggere differenze di colore tra differenti partite, non ci assumiamo nessuna responsabilità per il trasferimento di colore/pigmenti causato da abbigliamento e accessori