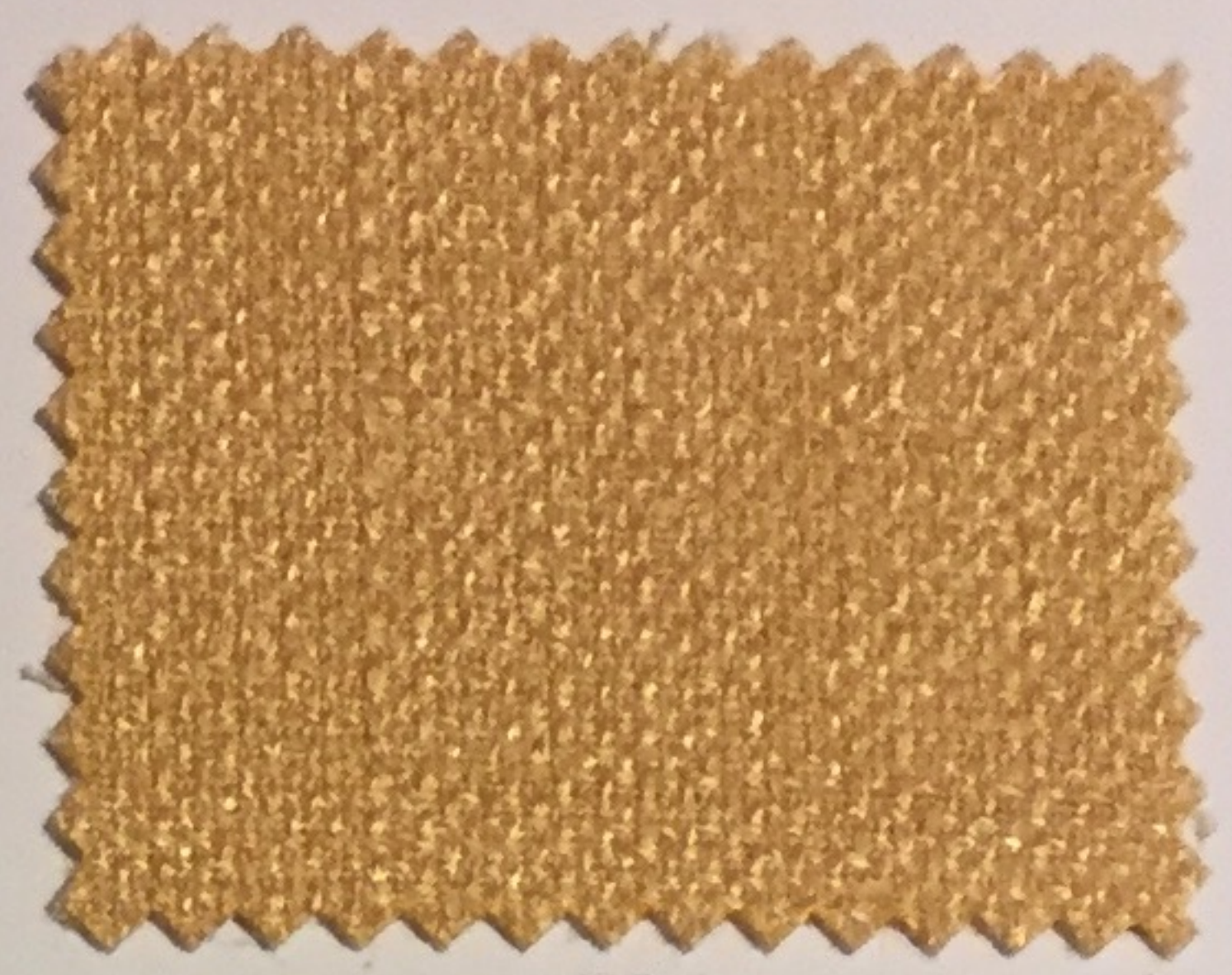


411



804



504



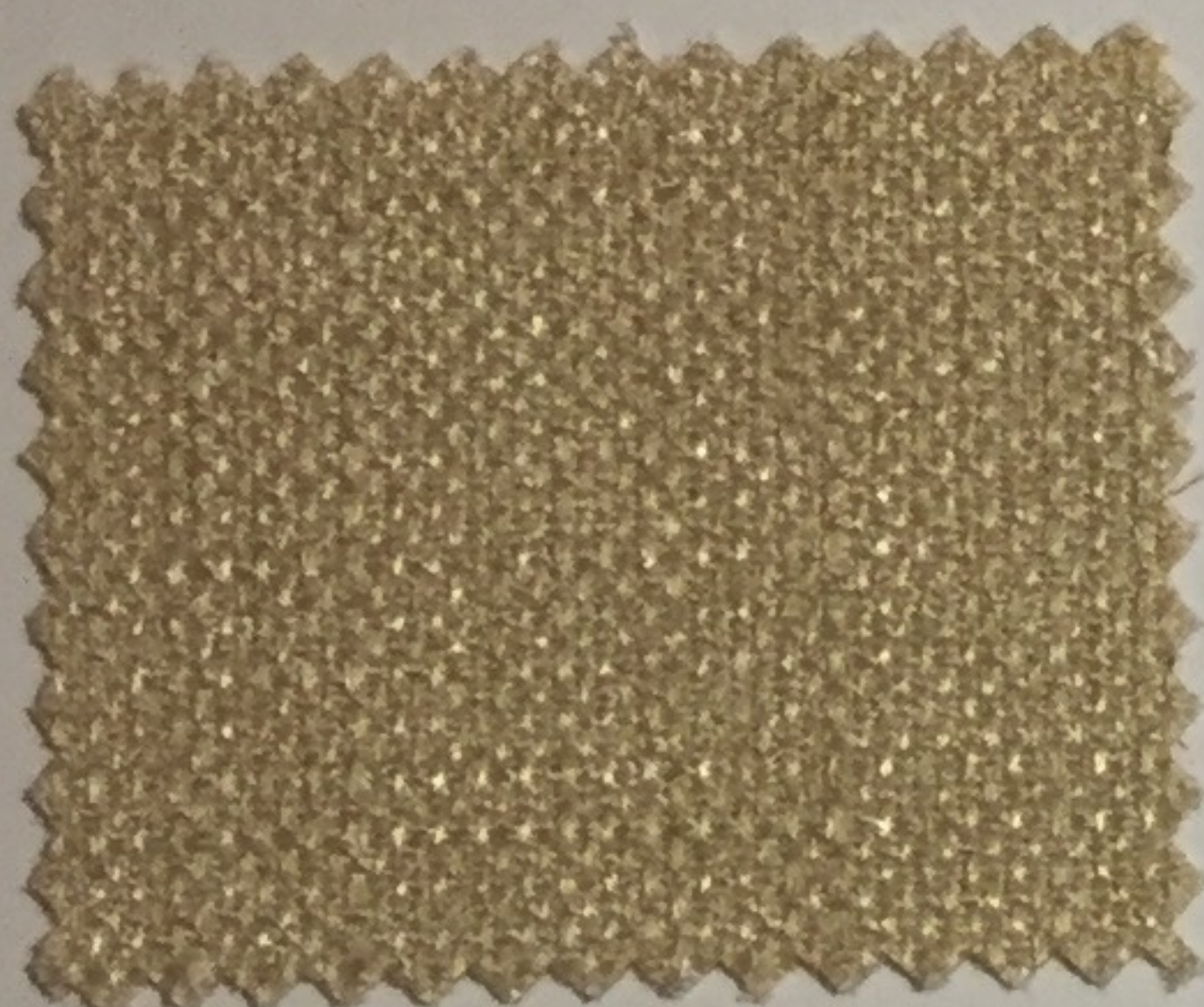
100



806



505



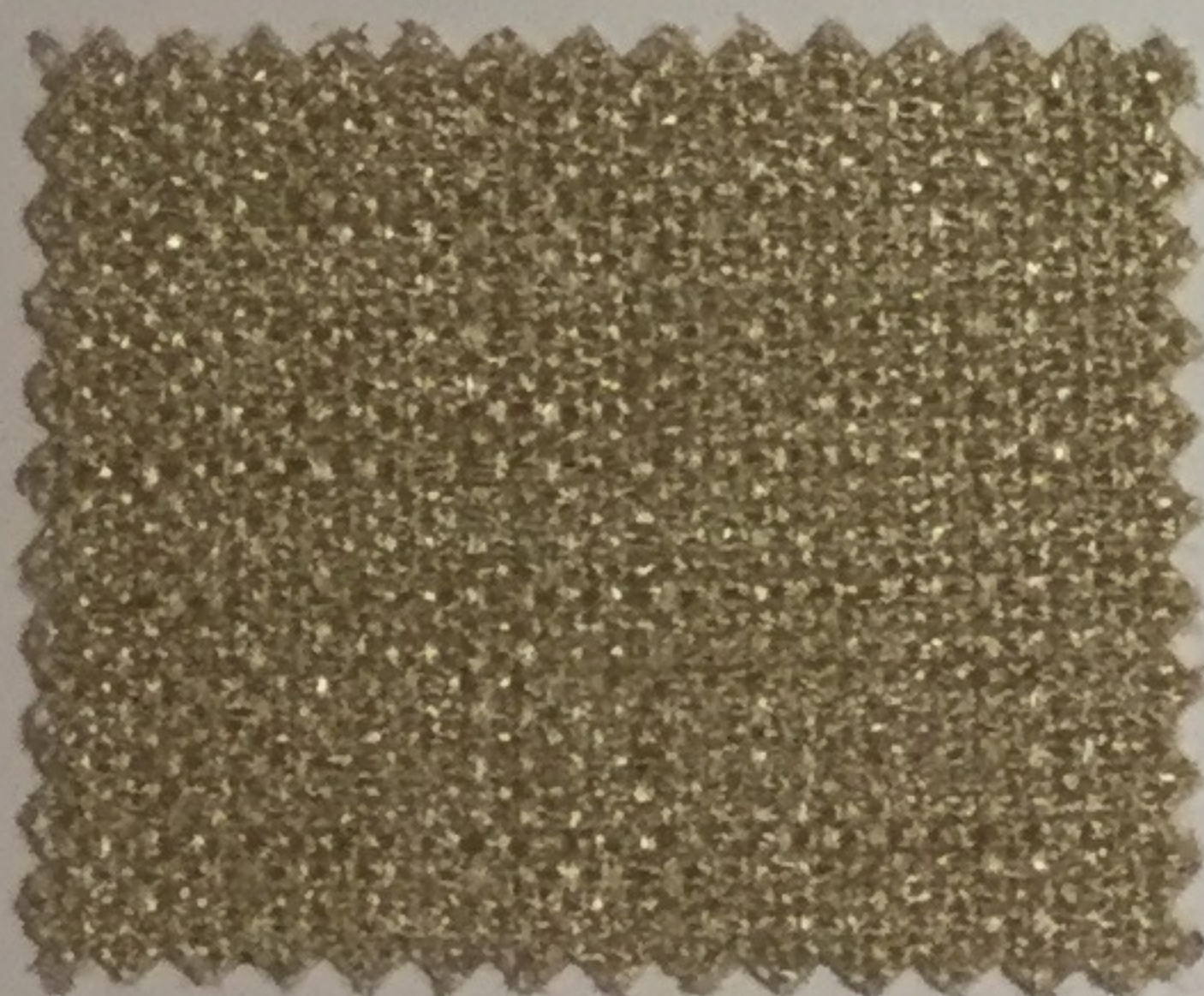
414



805



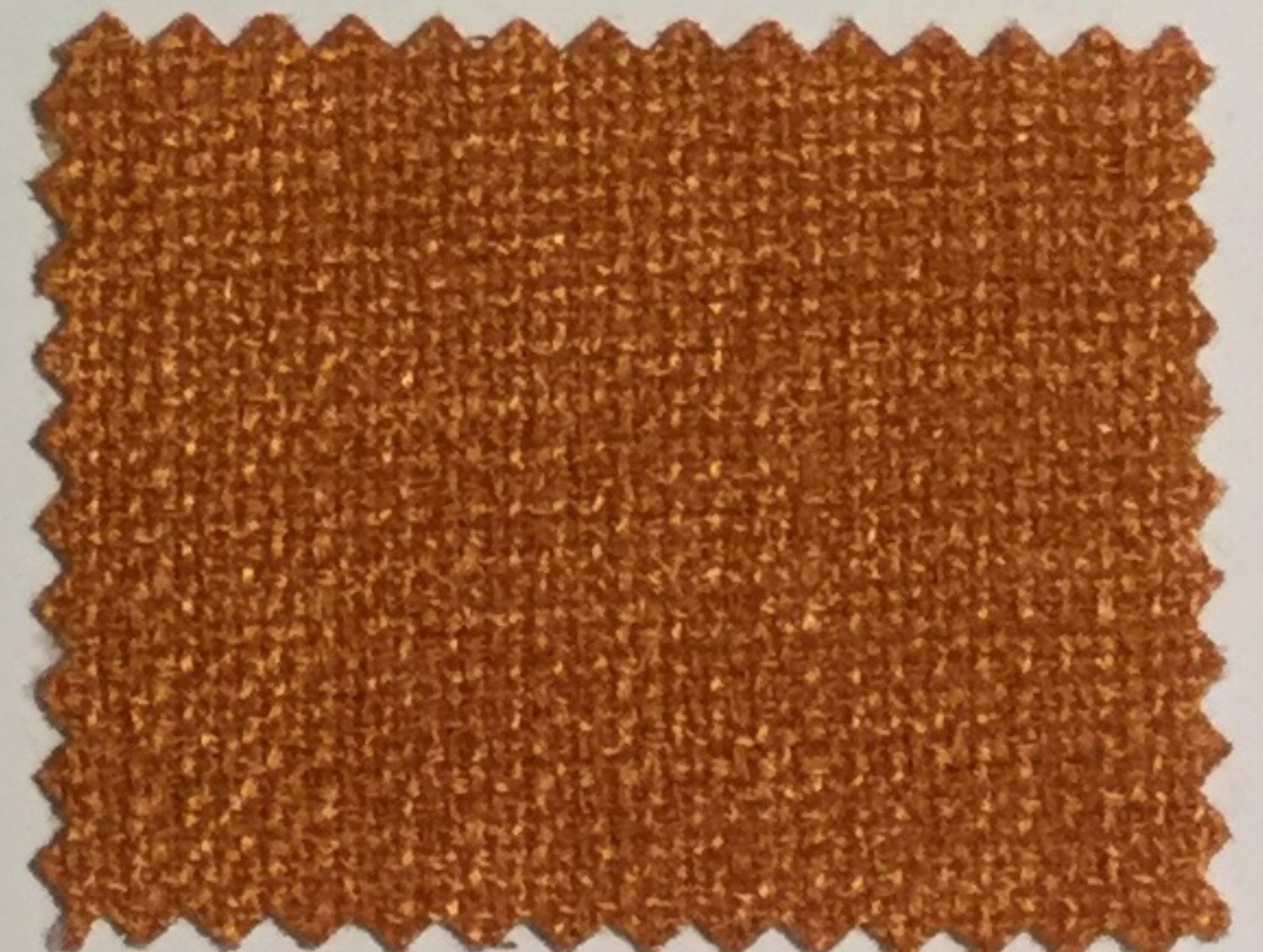
503



401



427



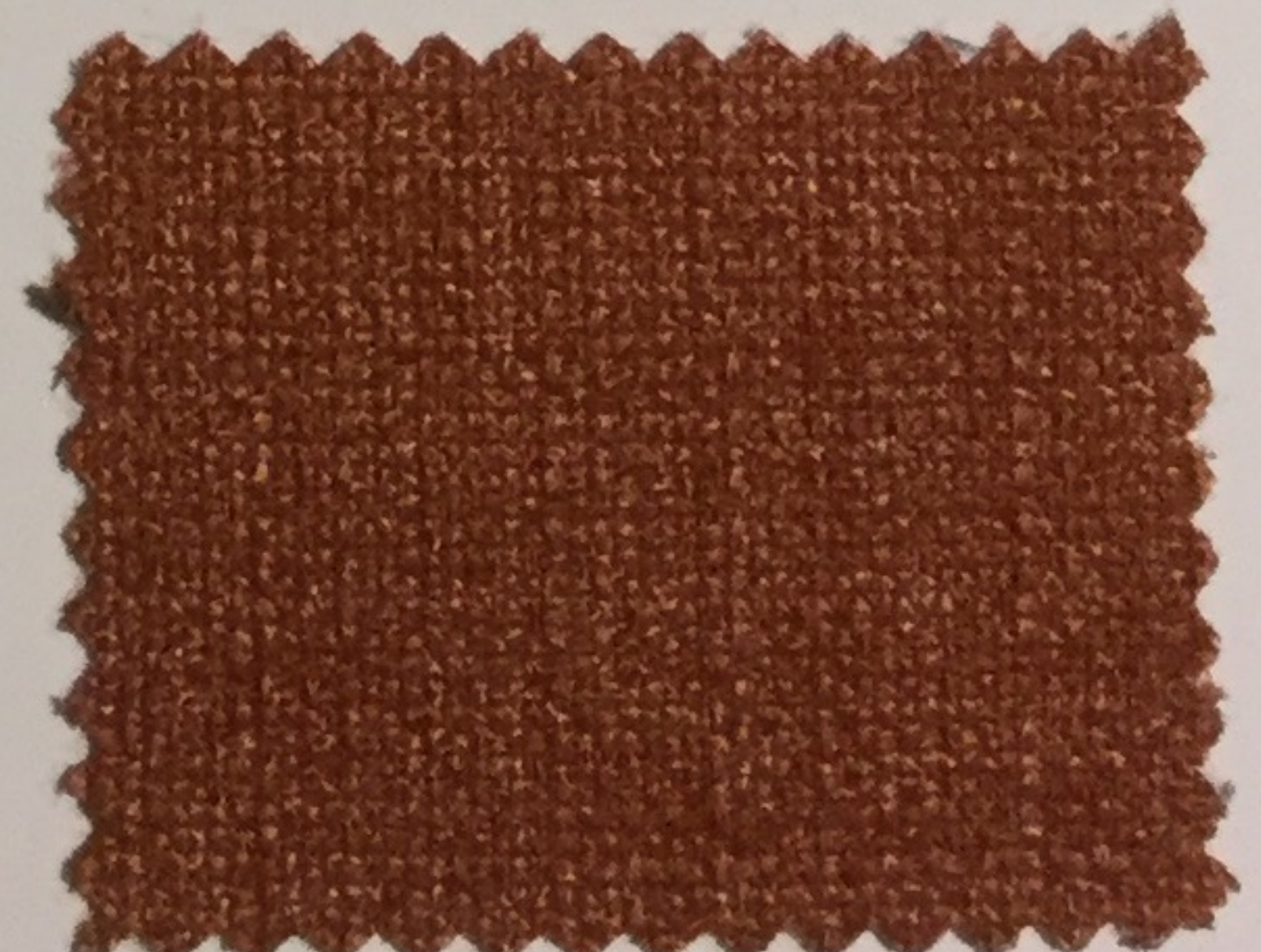
301



900



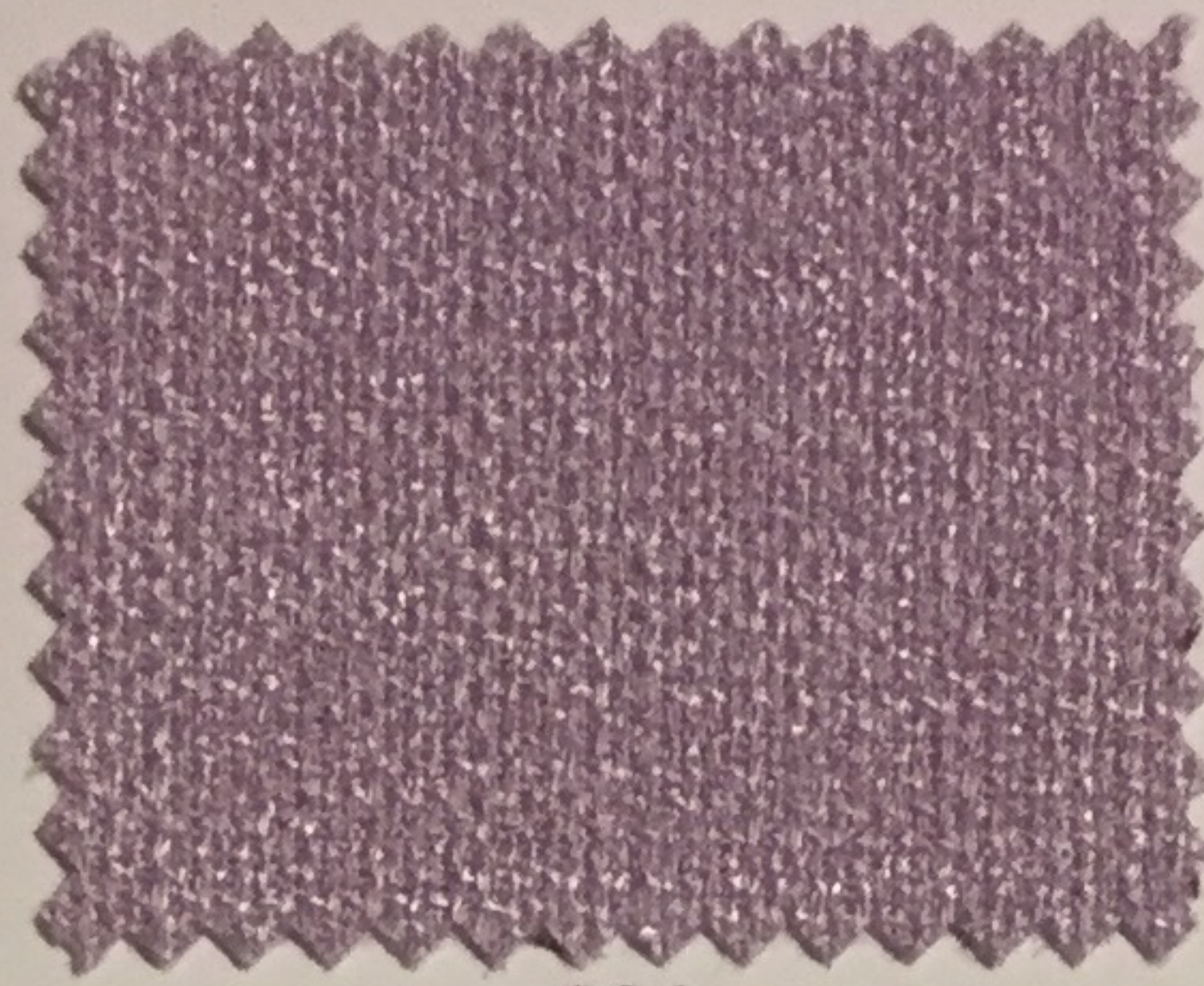
405



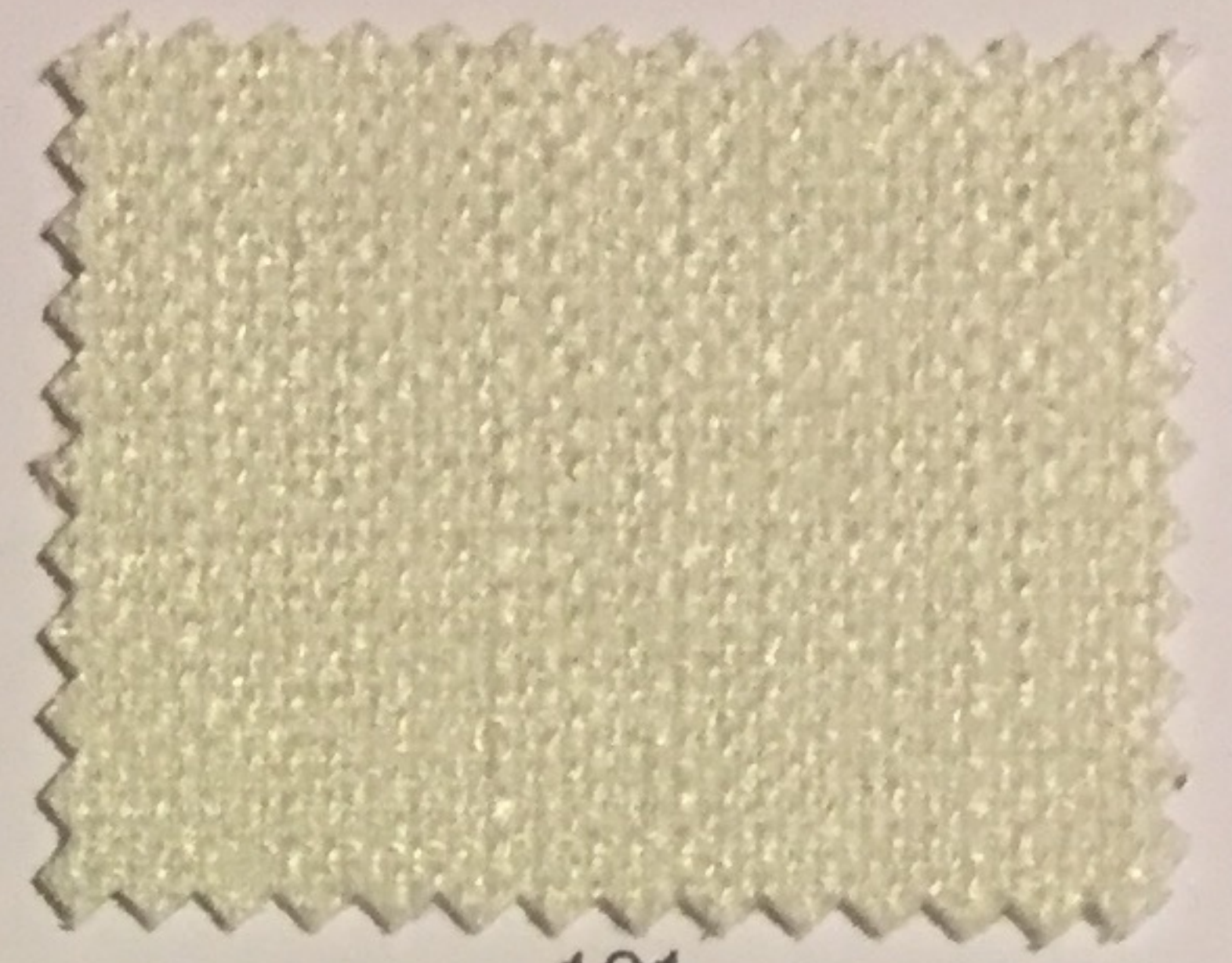
300



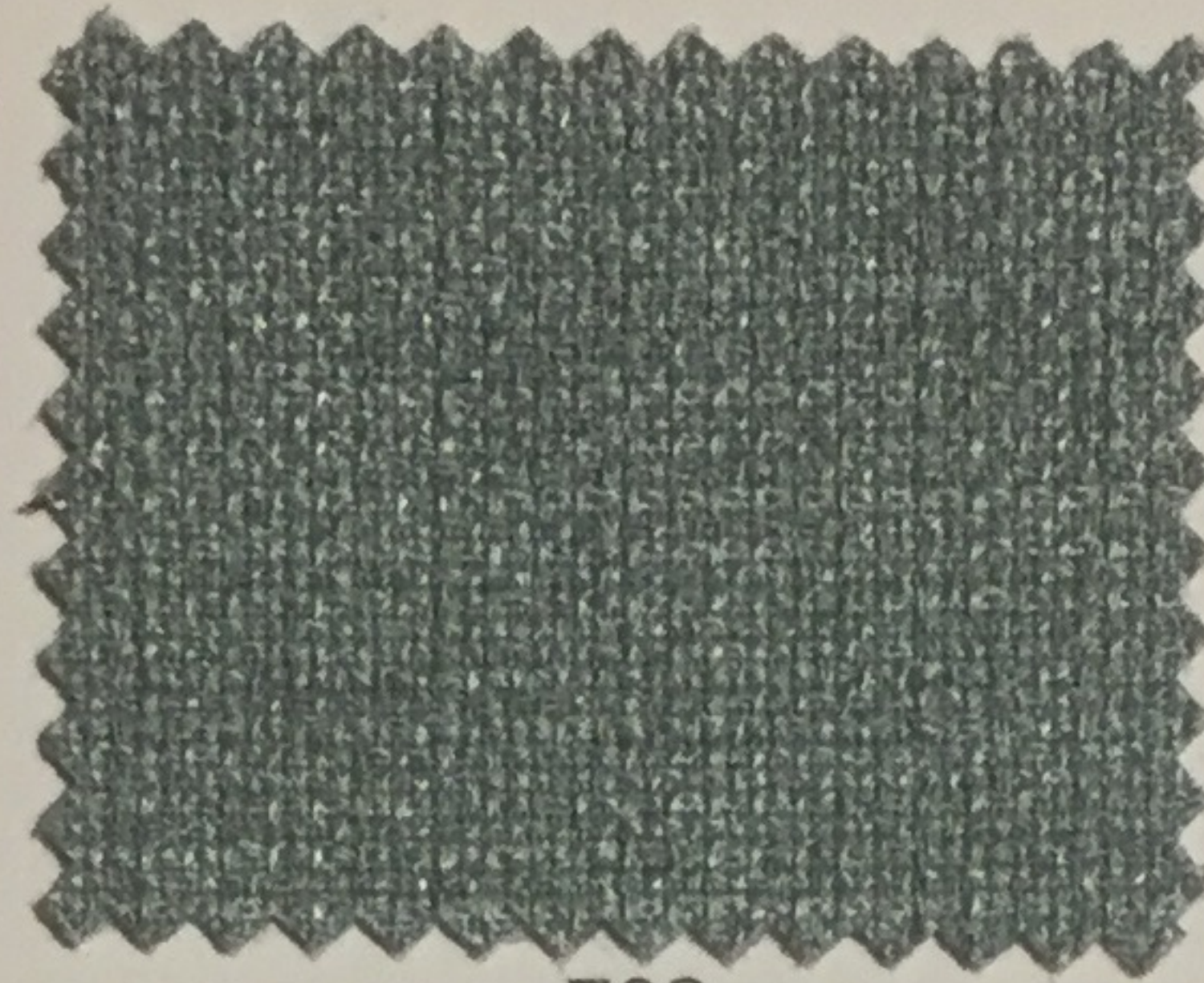
002



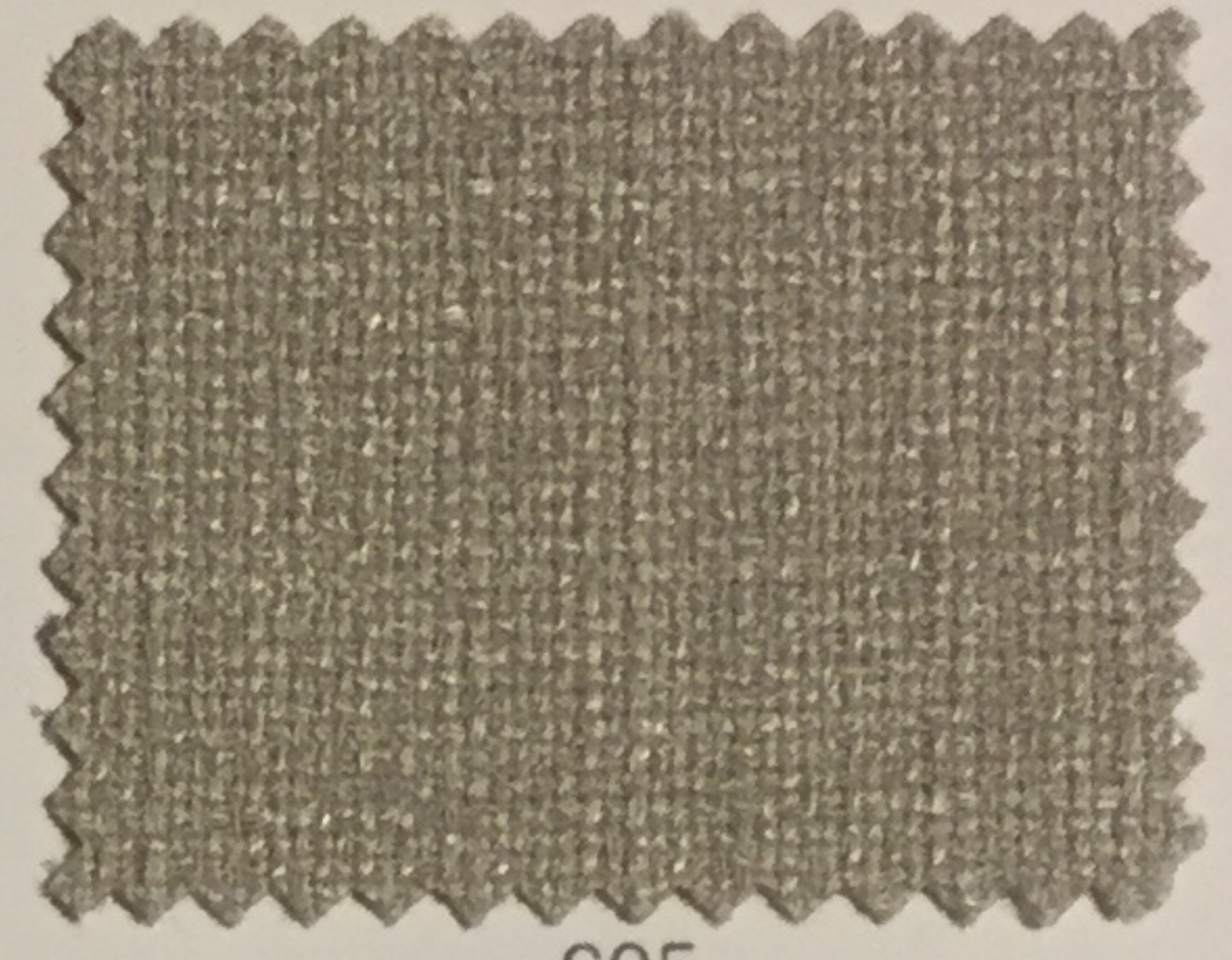
001



101



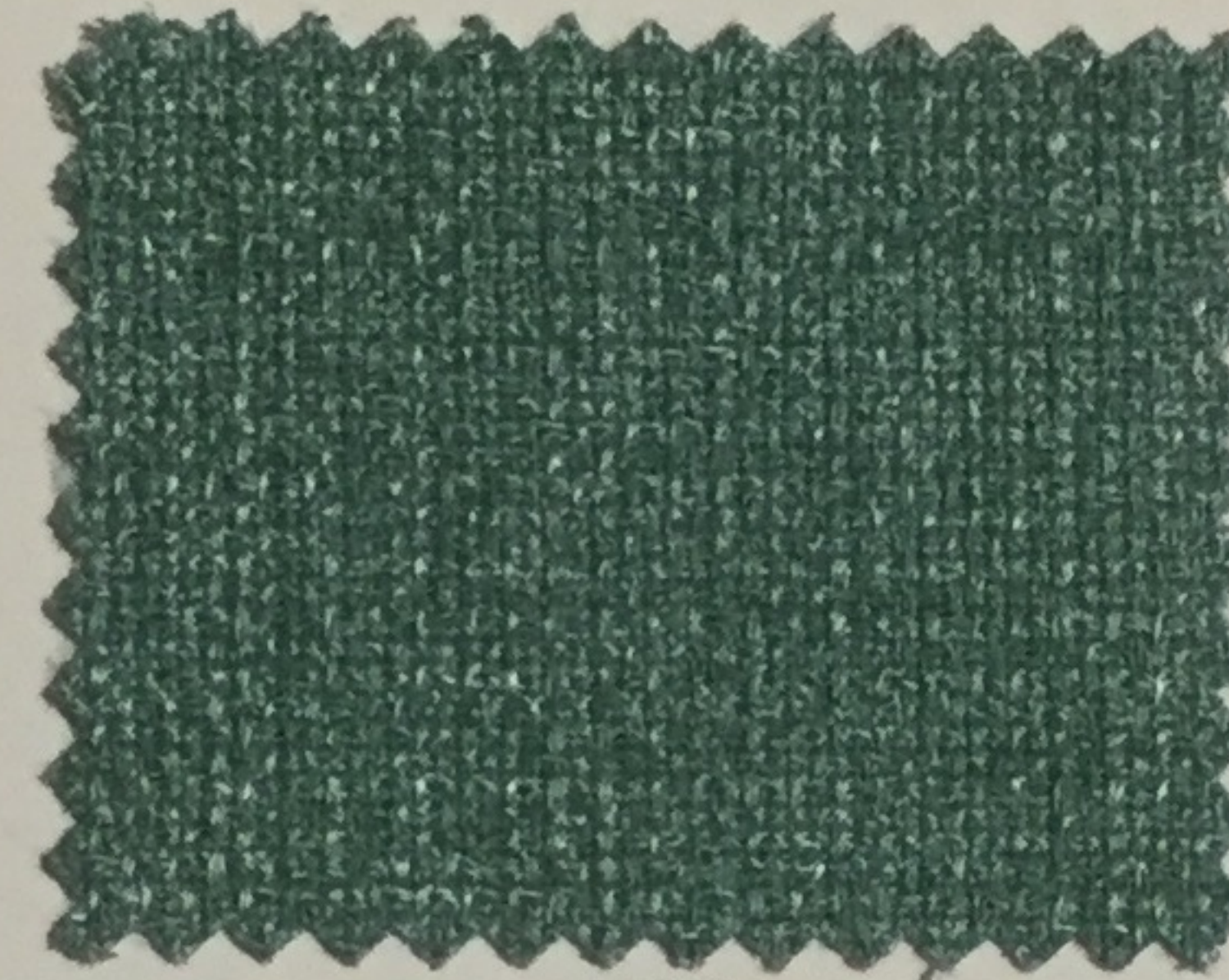
709



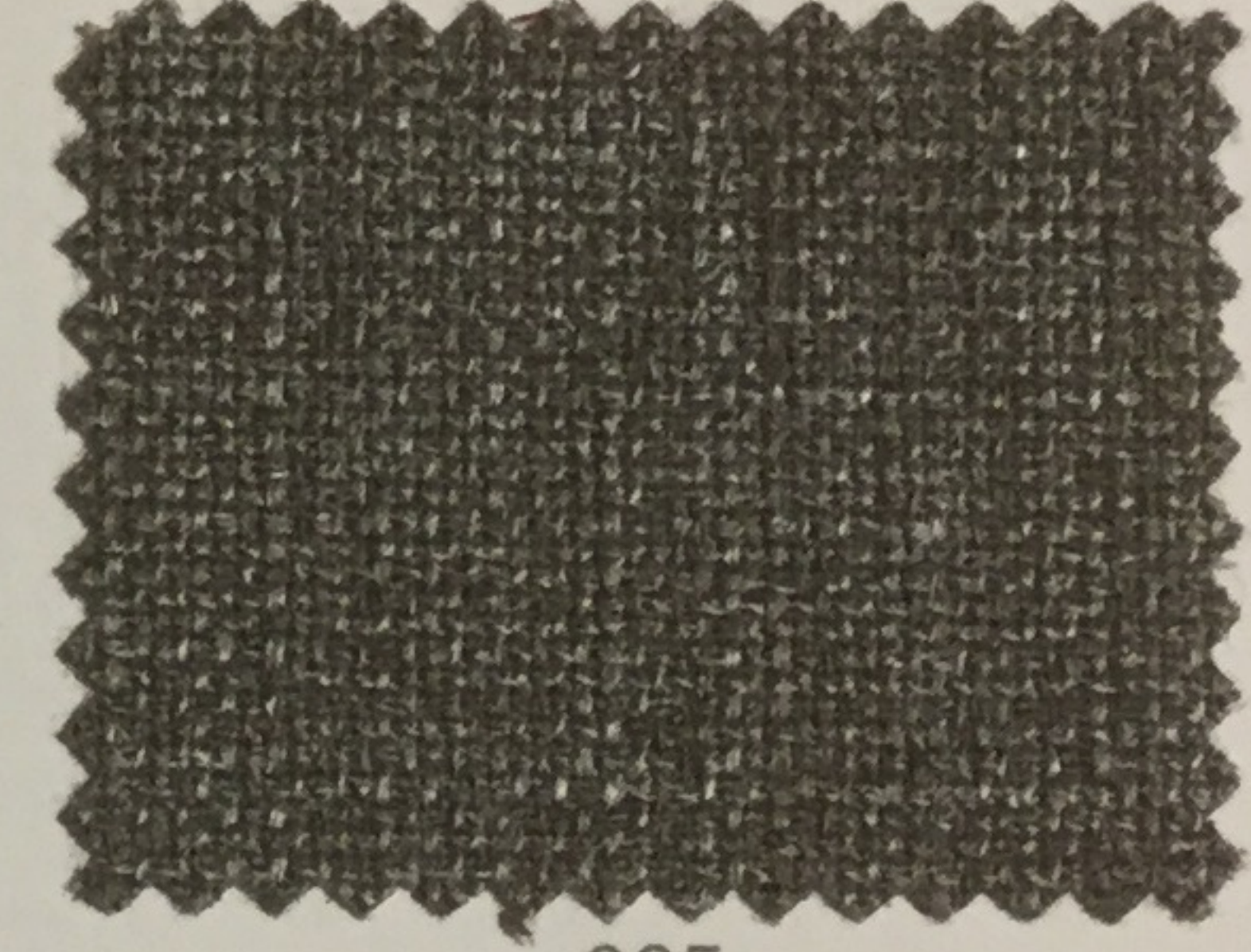
605



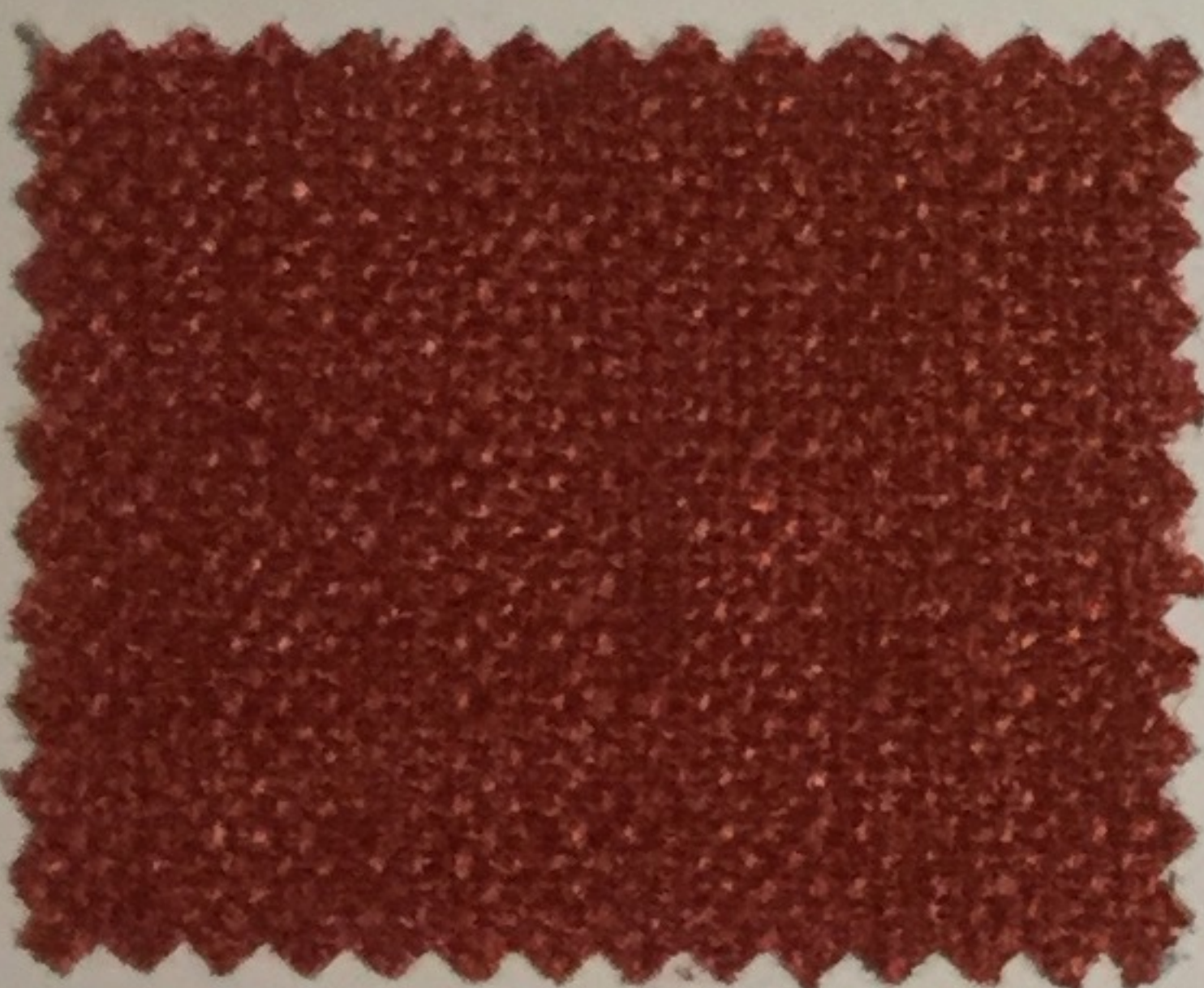
305



700



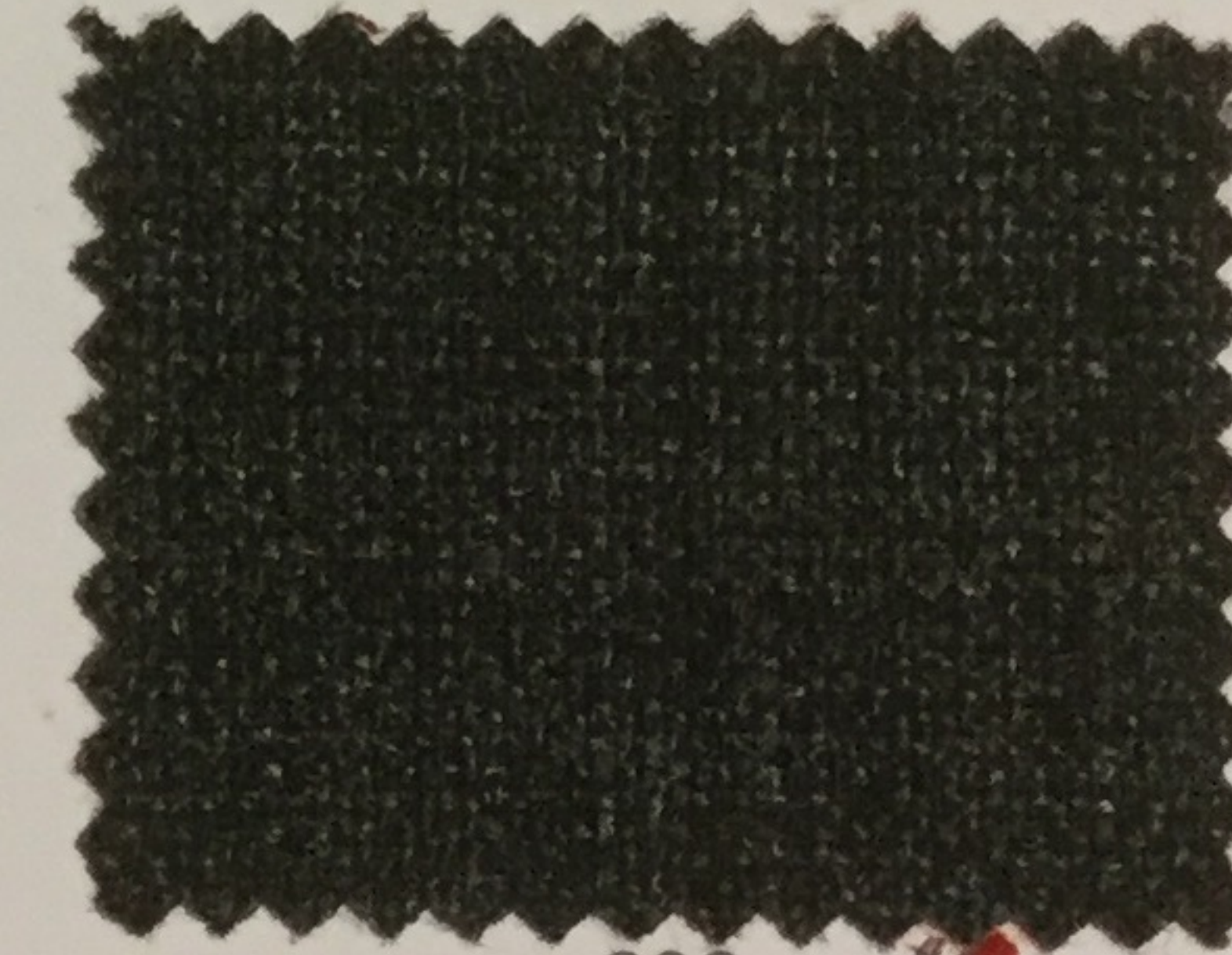
005



304



701



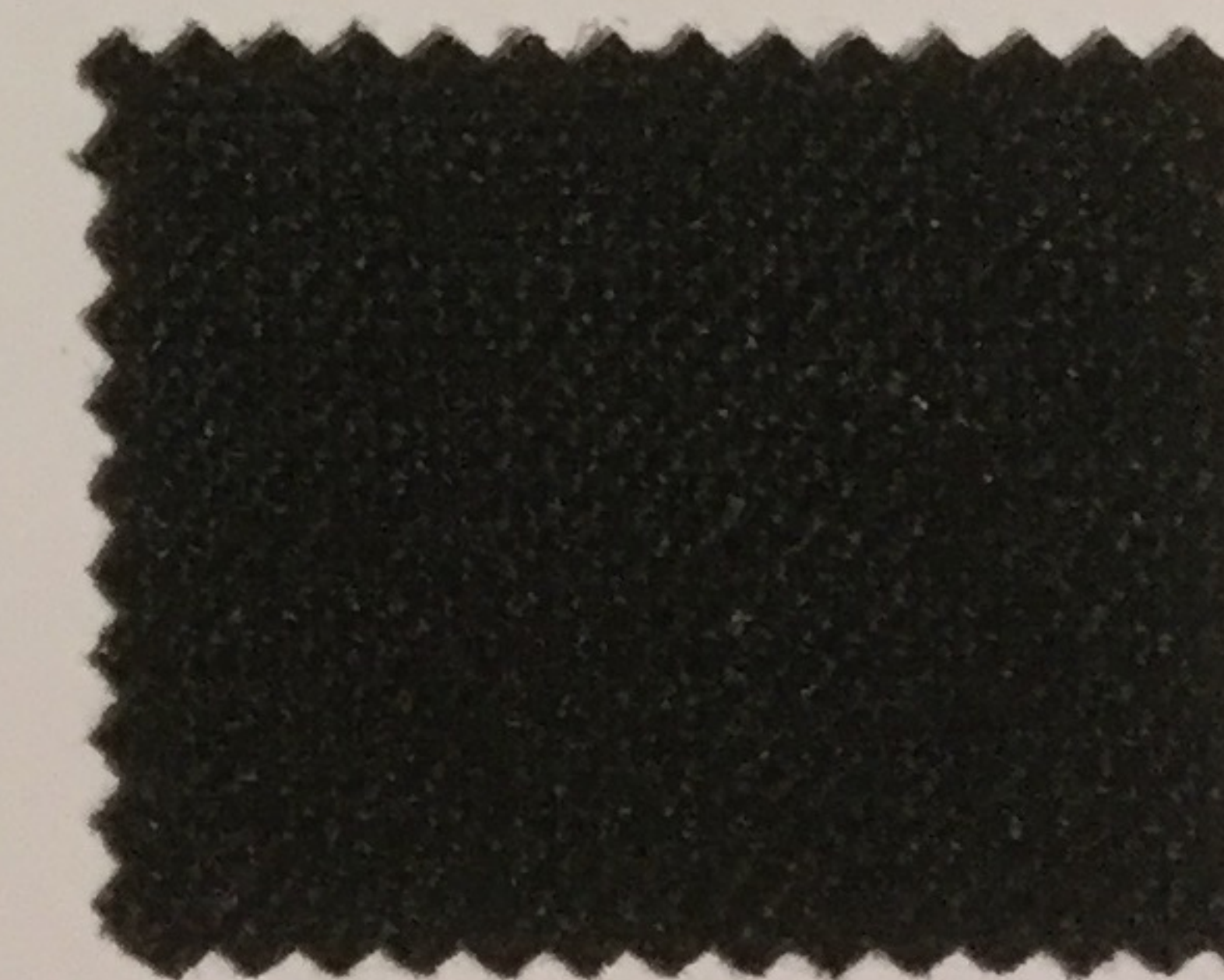
606



303

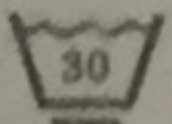

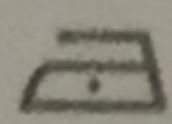
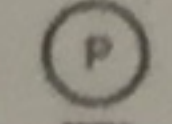
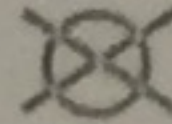
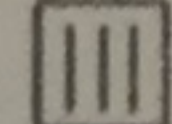


705



201

caratteristiche tecniche - technical details

composizione composition	100% PL
altezza width	140 cm
peso weight	330 gr/m ² ± 4%
solidità delle tinte allo sfregamento colour fastness to rubbing crockmeter - ISO 105 X12	secco / dry 5 umido / wet 5
resistenza al pilling pilling resistance ISO 12945-2	5
resistenza all'abrasione abrasion resistance martindale - UNI ISO 12947-2	30.000 cicli / rubs (end point)
norme di manutenzione cleaning	     
nota bene please note	idrorepellente - water repellent calo: ±1% - shrinkage: ±1% non centrifugare - do not centrifuge

Questi valori sono dati a titolo indicativo e in buona fede e non possono considerarsi in alcun caso vincolanti. L'impiego del prodotto deve essere valutato in base a ciò che si deve realizzare. Non si risponde del suo utilizzo per impieghi impropri. Sono ammesse leggere differenze di colore tra differenti partite.

The overmentioned data correspond to average values communicated in good faith, but they cannot be considered as a contract document. The product use has to be considered in term of what has to be realized. The product cannot be held up responsible when it is improperly use. Slight colors differences among several lots are admitted.